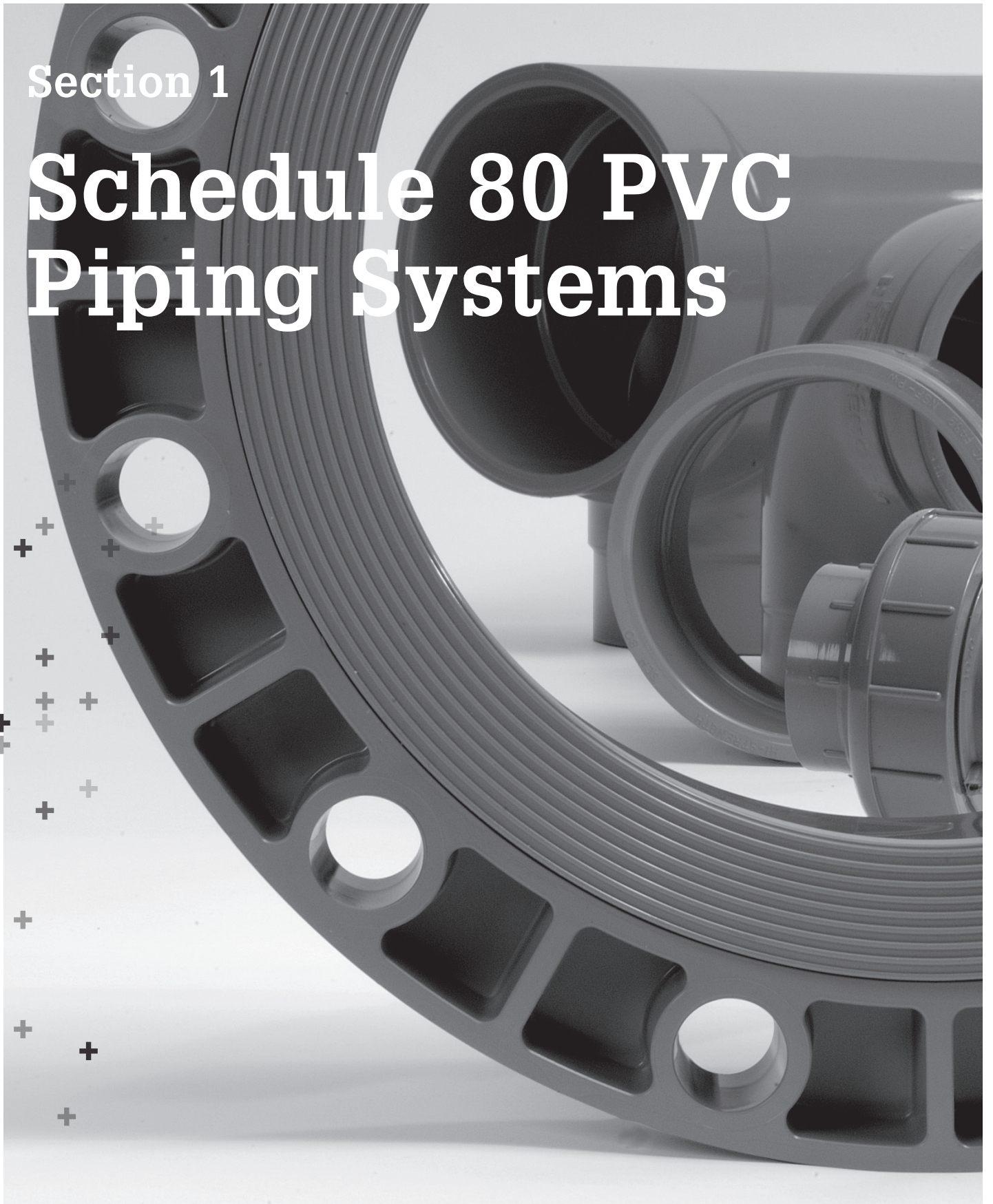


Section 1

Schedule 80 PVC Piping Systems



Glossary

FPT	=	Female Pipe Thread
MPT	=	Male Pipe Thread
S	=	Tapered Socket
SPG	=	Spigot End (same dimension as pipe outside diameter)
*	=	Non-Returnable / Non-cancellable
^	=	40% Restocking Fee
HS	=	High Strength Design
SL	=	Streamline Design
BUSH	=	Assembled Fitting from Molded Components
FAB	=	Fabricated Fitting

The technical information given in this publication implies no warranty of any kind and is subject to change without notice. Please consult our Terms and Conditions of Sale.

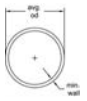
For complete technical information, please consult the Vinyl Catalog and Technical Information

For more information about any of our product lines, please visit www.gfps.com



Harvel® Industrial PVC Pressure Pipe

111



Harvel® Industrial PLUS PVC Pressure Pipe

112



Schedule 80 PVC Pressure Fittings

113



Schedule 80 PVC Low Pressure Fittings

133



Schedule 80 PVC DWV Fittings

135



Schedule 80 PVC Metal Transition Fittings

138



Schedule 80 PVC Expansion Joints

140

Specifications, Standards and Tolerances

Specifications and Standards

NSF/ANSI Standard 14

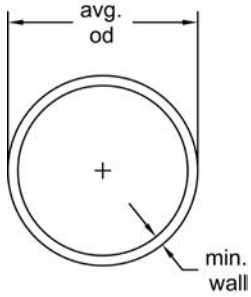
NSF/ANSI Standard 61

ASTM D 1784	:	Material PVC Type I, Grade I Gray (cell classification 12454)
ASTM D 1785	:	PVC Schedule 80 Pipe
ASTM D 2467	:	PVC Schedule 80 Socket & Threaded Fittings
ASTM D 2464	:	PVC Schedule 80 Threaded Fittings
ASTM F 1498	:	PVC Schedule 80 Taper Threads
ASTM D 2672	:	PVC Schedule 80 Tapered Sockets for Bell End Pipe
ASTM F 1970	:	PVC Schedule 80 Unions
ANSI B16.5	:	Outside Diameter & Flange Bolt Hole Patterns
ANSI B1.20.1	:	PVC Schedule 80 NPT Threads
CSA B137.3	:	PVC Schedule 80 Pipe

Molded Dimension Tolerances

A	Piston Position; Expansion Joints : ± 0.03
D	Outside Diameter : ± 0.06
G, G1	Intersections of centerlines to bottom of socket; 90° Ells, Tees : up to 4" ± 0.03 ; 6" and above ± 0.06
GJ, GN	Intersections of centerlines to bottom of socket; 45° Wyes : up to 4" ± 0.03 ; 6" and above ± 0.06
H, HJ, HN	Intersections of centerlines to face of fitting; 90° Ells, 45° Ells, Tees, 45° Wyes : up to 4" ± 0.03 ; 6" and above ± 0.06
HL	Socket Bottom to Face of Fitting : up to 4" ± 0.03 ; 6" and above ± 0.06
J	Intersections of centerlines to bottom of socket; 45° & 30° Ells : up to 4" ± 0.03 ; 6" and above ± 0.06
L	Overall Length of fitting : ± 0.06
N	Socket Bottom to Socket Bottom; Couplings, Unions : ± 0.06
N1	Socket Bottom to Face of Flange : ± 0.06
R	Thickness on Plugs, Flanges : ± 0.03
T, T1	Effective Thread Length : Reference Only
W	Height of Cap : ± 0.06

Harvel® Industrial PVC Pressure Pipe

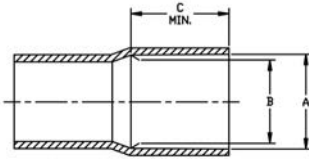


Plain End Pipe - 20 ft lengths

- Refer to Industrial PLUS for sizes 1/8", 1/4", 3/8", 3-1/2", 5", 14"-24"
- Max Water Pressure at 73°F (22.7°C) with solvent-cemented joints
- Meets NSF[®]-pw-G
- Non - CSA Approved

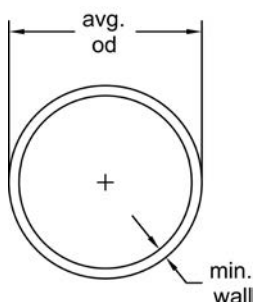
Size (inch)	P/L	Plain End Part No.	Lift Qty. (20ft Lgths) (ft)	Average O.D. (inch)	Min. Wall (inch)	Wt/Ft (lbs/ft)	Max Water Pressure (psi)
1/2	H18	H0800050PG2000	5700	0.840	0.147	0.202	850
3/4	H18	H0800075PG2000	5260	1.050	0.154	0.273	690
1	H18	H0800100PG2000	4280	1.315	0.179	0.402	630
1 1/4	H18	H0800125PG2000	2360	1.660	0.191	0.554	520
1 1/2	H18	H0800150PG2000	2060	1.900	0.200	0.673	470
2	H18	H0800200PG2000	1660	2.375	0.218	0.932	400
2 1/2	H18	H0800250PG2000	1080	2.875	0.276	1.419	420
3	H18	H0800300PG2000	840	3.500	0.300	1.903	370
4	H18	H0800400PG2000	520	4.500	0.337	2.782	320
6	H18	H0800600PG2000	340	6.625	0.432	5.313	280
8	H18	H0800800PG2000	220	8.625	0.500	8.058	250
10	H18	H0801000PG2000	80	10.750	0.593	11.956	230
12	H18	H0801200PG2000	60	12.750	0.687	16.437	230

Belled End Pipe - 20 ft length Less Bell



Size (inch)	P/L	Belled End Part No.	A-Socket Entrance (Belled Pipe)	B-Socket Bottom (Belled Pipe)	C-Min. (Belled Pipe)
1/2	H18	H0800050PG200B	0.848±0.004	0.836±0.004	1.000
3/4	H18	H0800075PG200B	1.058±0.004	1.046±0.004	1.250
1	H18	H0800100PG200B	1.325±0.005	1.310±0.005	1.500
1 1/4	H18	H0800125PG200B	1.678±0.002	1.653±0.005	1.870
1 1/2	H18	H0800150PG200B	1.910±0.004	1.884±0.004	2.000
2	H18	H0800200PG200B	2.387±0.006	2.369±0.006	2.250
2 1/2	H18	H0800250PG200B	2.889±0.007	2.868±0.007	2.500
3	H18	H0800300PG200B	3.516±0.008	3.492±0.008	3.250
4	H18	H0800400PG200B	4.518±0.009	4.491±0.009	4.000
6	H18	H0800600PG200B	6.647±0.011	6.614±0.011	6.000
8	H18	H0800800PG200B	8.655±0.015	8.610±0.015	6.000
10	H18	H0801000PG200B	10.776±0.015	10.737±0.015	8.000
12	H18	H0801200PG200B	12.778±0.015	12.736±0.015	8.500

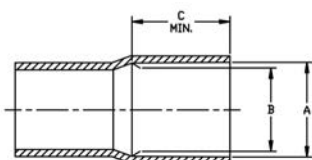
Harvel® Industrial PLUS PVC Pressure Pipe



Plain End Pipe - 20 ft lengths

- Meets NSF®-pw-G
- Meets CAN/CSA B137.3 Requirements

Size (inch)	P/L	Plain End Part No.	Lift Qty. (20ft Lgths) (ft)	Average O.D. (inch)	Min. Wall (inch)	Wt/Ft (lbs/ft)	Max Water Pressure (psi)
¼	H50	H0800013PG2000	5700	0.405	0.095	0.058	1230
¼	H50	H0800025PG2000	5700	0.540	0.119	0.100	1130
¾	H50	H0800038PG2000	5700	0.675	0.126	0.138	920
½	H50	HX800050PG2000	5700	0.840	0.147	0.202	850
¾	H50	HX800075PG2000	5260	1.050	0.154	0.273	690
1	H50	HX800100PG2000	4280	1.315	0.179	0.402	630
1 ¼	H50	HX800125PG2000	2360	1.660	0.191	0.554	520
1 ½	H50	HX800150PG2000	2060	1.900	0.200	0.673	470
2	H50	HX800200PG2000	1660	2.375	0.218	0.932	400
2 ½	H50	HX800250PG2000	1080	0.287	0.276	1.419	420
3	H50	HX800300PG2000	840	3.500	0.300	1.903	370
3 ½	H50	H0800350PG2000	680	4.000	0.318	2.322	350
4	H50	HX800400PG2000	520	4.500	0.337	2.782	320
5	H50	H0800500PG2000	400	5.563	0.375	3.867	290
6	H50	HX800600PG2000	340	6.625	0.432	5.313	280
8	H50	HX800800PG2000	220	8.625	0.500	8.058	250
10	H50	HX801000PG2000	80	10.750	0.593	11.956	230
12	H50	HX801200PG2000	60	12.750	0.687	16.437	230
14	H50	H0801400PG2000	60	14.000	0.750	19.790	220
16	H50	H0801600PG2000	60	16.000	0.843	25.430	220
18	H50	H0801800PG2000	40	18.000	0.937	31.830	220
20	H50	H0802000PG2000	40	20.000	1.031	40.091	220
24	H50	H0802400PG2000	40	24.000	1.218	56.882	210

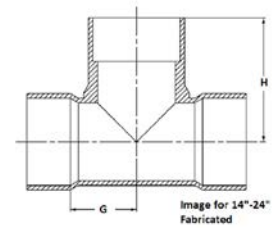
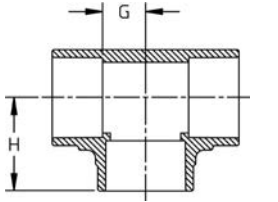
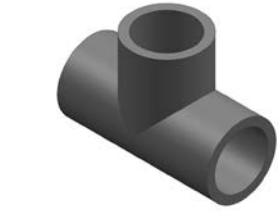


Belled End Pipe - 20 ft length Less Bell

Size (inch)	P/L	Belled End Part No.	A-Socket Entrance (Belled Pipe)	B-Socket Bottom (Belled Pipe)	C-Min. (Belled Pipe)
½	H50	HX800050PG200B	0.848±0.004	0.836±0.004	1.000
¾	H50	HX800075PG200B	1.058±0.004	1.046±0.004	1.250
1	H50	HX800100PG200B	1.325±0.005	1.310±0.005	1.500
1 ¼	H50	HX800125PG200B	1.670±0.005	1.655±0.005	1.750
1 ½	H50	HX800150PG200B	1.912±0.006	1.894±0.006	2.000
2	H50	HX800200PG200B	2.387±0.006	2.363±0.006	2.250
2 ½	H50	HX800250PG200B	2.889±0.007	2.861±0.007	2.500
3	H50	HX800300PG200B	3.516±0.008	3.484±0.008	3.250
3 ½	H50	H0800350PG200B	4.016±0.008	3.984±0.008	3.500
4	H50	HX800400PG200B	4.518±0.009	4.482±0.009	4.000
5	H50	H0800500PG200B	5.583±0.010	5.543±0.010	4.000
6	H50	HX800600PG200B	6.647±0.011	6.603±0.011	6.000
8	H50	HX800800PG200B	8.655±0.015	8.598±0.015	6.000
10	H50	HX801000PG200B	10.776±0.015	10.722±0.015	7.500
12	H50	HX801200PG200B	12.778±0.015	12.721±0.015	8.500
14	H50	H0801400PG200B	14.035±0.015	13.985±0.015	9.000
16	H50	H0801600PG200B	16.045±0.015	15.980±0.015	10.000
18	H50	H0801800PG200B	18.055±0.020	17.980±0.020	12.000
20	H50	H0802000PG200B	20.065±0.025	19.980±0.025	12.000
24	H50	H0802400PG200B	24.075±0.030	23.970±0.030	12.000

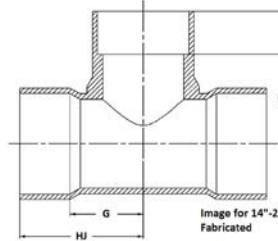
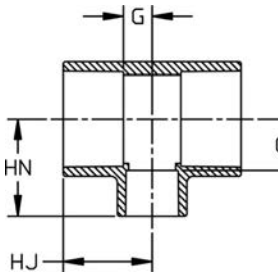
Schedule 80 PVC Pressure Fittings

Tee (S x S x S) Schedule 80 Harvel® PVC



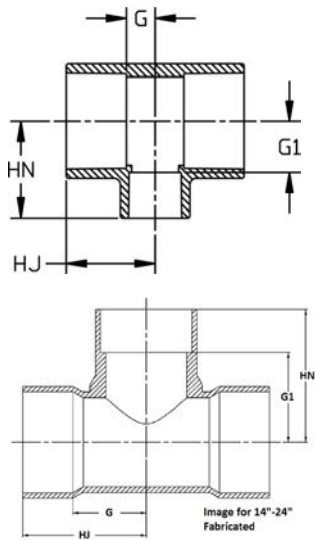
Size (inch)	P/L	Part No.	Pack Qty	H (inch)	G (inch)	Design
¼	608	801-002	50	0.95	0.27	HS
⅜	608	801-003	50	1.16	0.38	HS
½	608	801-005	25	1.41	0.51	SL
¾	608	801-007	25	1.60	0.58	SL
1	608	801-010	20	1.85	0.71	SL
1 ¼	608	801-012	10	2.17	0.91	SL
1 ½	608	801-015	10	2.43	1.04	SL
2	608	801-020	10	2.81	1.30	SL
2 ½	608	801-025	5	3.31	1.55	SL
3	608	801-030	5	3.71	1.81	SL
4	608	801-040	5	4.60	2.33	SL
6	608	801-060	2	6.53	3.51	SL
8	608	801-080	1	8.66	4.58	SL
10	602	801-100	1	10.79	5.78	SL
12	602	801-120	1	12.96	6.94	SL
14	A33	801-140N	1	19.50	10.88	FAB
16	A33	801-160N	1	22.75	12.13	FAB
18	A33	801-180N	1	26.00	13.38	FAB
20	A33	801-200N	1	28.25	14.63	FAB
24	A33	801-240N	1	34.50	17.13	FAB

Reducing Tee (S x S x S) Schedule 80 Harvel® PVC



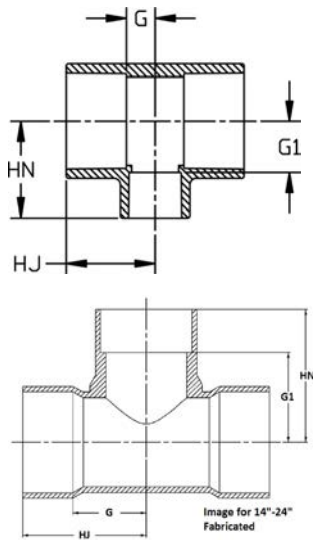
Size (inch)	P/L	Part No.	Pack Qty	HJ (inch)	HN (inch)	G (inch)	G1 (inch)	Design
¾ x ½	608	801-101	25	1.62	1.62	0.60	0.72	SL
1 x ½	608	801-130	25	1.87	1.64	0.72	0.74	SL
1 x ¾	608	801-131	20	1.86	1.89	0.72	0.75	SL
1 ¼ x ½	608	801-166FB	20	1.99	2.35	0.73	1.47	BUSH
1 ¼ x ¾	608	801-167FB	20	1.99	2.35	0.73	1.33	BUSH
1 ¼ x 1	608	801-168	20	2.01	2.05	0.73	0.91	SL
1 ½ x ½	608	801-209	5	1.92	1.91	0.53	1.03	SL
1 ½ x ¾	608	801-210	5	1.99	2.07	0.60	1.05	SL
1 ½ x 1	608	801-211	5	2.12	2.17	0.72	1.03	SL
1 ½ x 1 ¼	608	801-212FB	5	2.44	2.74	1.04	1.47	BUSH
2 x ½	608	801-247	5	1.99	2.16	0.54	1.28	SL
2 x ¾	608	801-248	5	2.22	2.31	0.60	1.30	SL
2 x 1	608	801-249	5	2.24	2.42	0.72	1.27	SL
2 x 1 ¼	608	801-250FB	5	2.81	3.11	1.30	1.84	BUSH
2 x 1 ½	608	801-251	5	2.54	2.66	1.03	1.27	SL
2 ½ x ½	608	801-287FB	5	3.05	3.35	1.28	2.44	BUSH
2 ½ x ¾	608	801-288FB	5	3.05	3.35	1.28	2.33	BUSH
2 ½ x 1	608	801-289FB	5	3.05	3.36	1.28	2.22	BUSH
2 ½ x 1 ¼	608	801-290FB	5	3.05	3.34	1.28	2.07	BUSH
2 ½ x 1 ½	608	801-291FB	5	3.05	3.35	1.28	1.94	BUSH
2 ½ x 2	608	801-292	5	3.05	3.05	1.28	1.54	SL
3 x ½	608	801-333FB	5	3.20	3.68	1.30	2.77	BUSH
3 x ¾	608	801-334FB	5	3.20	3.68	1.30	2.66	BUSH
3 x 1	608	801-335FB	5	3.20	3.69	1.30	2.55	BUSH
3 x 1 ¼	608	801-336FB	5	3.20	3.67	1.30	2.40	BUSH
3 x 1 ½	608	801-337FB	5	3.20	3.68	1.30	2.27	BUSH
3 x 2	608	801-338	5	3.20	3.39	1.30	1.87	SL
3 x 2 ½	608	801-339FB	5	3.73	4.07	1.81	2.17	BUSH
4 x ½	608	801-415FB	5	3.52	4.19	1.27	3.28	BUSH
4 x ¾	608	801-416FB	5	3.52	4.19	1.27	3.17	BUSH

table continued on the next page



Size (inch)	P/L	Part No.	Pack Qty	HJ (inch)	HN (inch)	G (inch)	G1 (inch)	Design
4 x 1	608	801-417	5	2.99	3.49	0.74	2.36	SL
4 x 1 ¼	608	801-418FB	5	3.52	4.18	1.27	2.91	BUSH
4 x 1 ½	608	801-419FB	5	3.52	4.19	1.27	2.78	BUSH
4 x 2	608	801-420	5	3.54	3.87	1.27	2.37	SL
4 x 2 ½	608	801-421FB	5	4.14	4.62	1.85	2.73	BUSH
4 x 3	608	801-422	5	4.13	4.26	1.85	2.35	SL
6 x ½	608	801-523FB	2	6.56	7.42	3.56	6.52	BUSH
6 x ¾	608	801-524FB	2	6.56	7.43	3.49	6.41	BUSH
6 x 1	608	801-525FB	2	6.56	7.44	3.49	6.29	BUSH
6 x 1 ¼	608	801-526FB	2	6.56	7.42	3.49	6.15	BUSH
6 x 1 ½	608	801-527FB	2	6.56	7.42	3.49	6.02	BUSH
6 x 2	608	801-528	2	4.45	5.25	1.43	3.74	SL
6 x 2 ½	608	801-529FB	2	6.56	7.52	3.49	5.62	BUSH
6 x 3	608	801-530FB	2	6.56	7.21	3.49	5.25	BUSH
6 x 4	608	801-532	2	6.57	6.80	3.49	4.47	HS
6 x 5	H04	801-533FS	1	9.00	9.50	5.75	6.50	FAB
8 x 4	608	801-582	2	8.41	8.53	4.29	6.30	SL
8 x 6	608	801-585	1	7.65	7.54	3.55	4.63	SL
10 x 1 ½	A33	801-618N	1	10.75	12.45	5.75	11.04	FAB
10 x 2	A33	801-619N	1	10.75	11.50	5.75	9.50	FAB
10 x 3	A33	801-621N	1	10.75	11.50	5.25	9.50	FAB
10 x 4	A33	801-623N	1	10.75	11.50	5.75	9.50	FAB
10 x 6	602	801-626FB	1	10.83	11.43	5.78	8.33	BUSH
10 x 6	A33	801-626N	1	11.88	12.50	6.88	9.50	FAB
10 x 8	602	801-628FB	1	10.83	11.46	5.78	7.36	BUSH
10 x 8	A33	801-628N	1	13.00	13.50	8.00	9.50	FAB
12 x 2	A33	801-659N	1	12.00	12.75	6.00	10.75	FAB
12 x 3	A33	801-661N	1	12.00	12.75	6.00	10.75	FAB
12 x 4	A33	801-663N	1	12.00	12.75	6.00	10.75	FAB
12 x 6	A33	801-666N	1	13.13	13.75	7.13	10.75	FAB
12 x 8	602	801-668FB	1	12.99	13.67	6.94	9.58	BUSH
12 x 8	A33	801-668N	1	14.13	14.75	8.13	10.75	FAB
12 x 10	602	801-670FB	1	12.99	13.68	6.94	8.57	BUSH
12 x 10	A33	801-670N	1	15.13	15.75	9.13	10.75	FAB
14 x 2	A33	801-692N	1	13.13	13.50	6.13	11.50	FAB
14 x 3	A33	801-694N	1	12.63	13.50	6.13	11.50	FAB
14 x 4	A33	801-696N	1	13.13	13.50	6.13	11.50	FAB
14 x 6	A33	801-698N	1	14.25	14.50	7.25	11.50	FAB
14 x 8	A33	801-700N	1	15.25	15.50	8.25	11.50	FAB
14 x 10	A33	801-702N	1	16.25	16.50	9.25	11.50	FAB
14 x 12	A33	801-704N	1	17.25	18.50	10.25	12.50	FAB
16 x 2	A33	801-726N	1	14.38	14.75	6.38	12.75	FAB
16 x 3	A33	801-728N	1	14.38	14.75	6.38	12.75	FAB
16 x 4	A33	801-730N	1	14.38	14.75	6.38	12.75	FAB
16 x 6	A33	801-732N	1	15.50	15.75	7.50	12.75	FAB
16 x 8	A33	801-734N	1	16.50	16.75	8.50	12.75	FAB
16 x 10	A33	801-736N	1	17.50	17.75	9.50	12.75	FAB
16 x 12	A33	801-738N	1	18.50	19.75	10.50	13.75	FAB
16 x 14	A33	801-740N	1	19.13	20.75	11.13	13.75	FAB
18 x 4	A33	801-784N	1	15.63	16.00	6.63	14.00	FAB
18 x 6	A33	801-786N	1	16.75	17.00	7.75	14.00	FAB
18 x 8	A33	801-788N	1	17.75	18.00	8.75	14.00	FAB
18 x 10	A33	801-790N	1	18.75	19.00	9.75	14.00	FAB
18 x 12	A33	801-792N	1	19.75	21.00	10.75	15.00	FAB
18 x 14	A33	801-794N	1	20.38	22.00	11.38	15.00	FAB
18 x 16	A33	801-796N	1	21.38	24.00	12.38	16.00	FAB
20 x 4	A33	801-814N	1	16.88	17.25	6.88	15.25	FAB
20 x 6	A33	801-816N	1	18.00	18.25	8.00	15.25	FAB
20 x 8	A33	801-818N	1	19.00	19.25	9.00	15.25	FAB
20 x 10	A33	801-820N	1	20.00	20.25	10.00	15.25	FAB
20 x 12	A33	801-822N	1	21.00	22.25	11.00	16.25	FAB
20 x 14	A33	801-824N	1	21.63	23.25	11.63	16.25	FAB
20 x 16	A33	801-826N	1	22.63	25.25	12.63	17.25	FAB

table continued on the next page

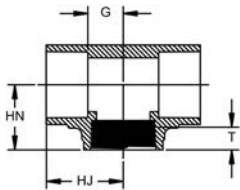


Size (inch)	P/L	Part No.	Pack Qty	HJ (inch)	HN (inch)	G (inch)	G1 (inch)	Design
20 x 18	A33	801-828N	1	23.63	27.25	13.63	18.25	FAB
24 x 4	A33	801-904N	1	19.38	19.50	7.38	17.50	FAB
24 x 6	A33	801-906N	1	20.50	20.50	8.50	17.50	FAB
24 x 8	A33	801-908N	1	21.50	21.50	9.50	17.50	FAB
24 x 10	A33	801-910N	1	22.50	22.50	10.50	17.50	FAB
24 x 12	A33	801-912N	1	23.50	24.50	11.50	18.50	FAB
24 x 14	A33	801-914N	1	24.13	25.50	12.13	18.50	FAB
24 x 16	A33	801-916N	1	25.13	27.50	13.13	19.50	FAB
24 x 18	A33	801-918N	1	26.13	30.50	14.13	20.50	FAB
24 x 20	A33	801-920N	1	27.13	32.50	15.13	20.50	FAB

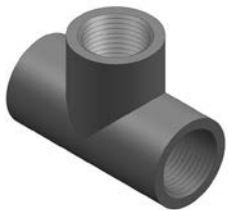
Tee (S x S x FPT) Schedule 80 Harvel® PVC



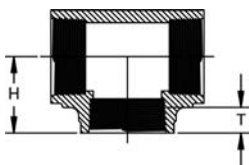
Size (inch)	P/L	Part No.	Pack Qty	HJ (inch)	HN (inch)	G (inch)	T (inch)	Design
½	608	802-005	25	1.41	1.30	0.53	0.81	HS
¾	608	802-007	25	1.60	1.37	0.60	0.71	HS
1	608	802-010	15	1.83	1.73	0.69	0.99	HS
1 ½	608	802-015	5	2.41	2.08	1.02	1.04	HS
2	608	802-020	5	2.79	2.37	1.29	1.08	HS



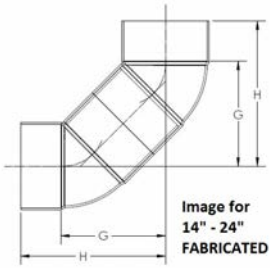
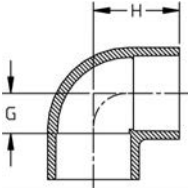
Tee (FPT x FPT x FPT) Schedule 80 Harvel® PVC



Size (inch)	P/L	Part No.	Pack Qty	H (inch)	T (inch)	Design
¼	608	805-002	50	0.94	0.59	HS
⅜	608	805-003	50	1.01	0.60	HS
½	608	805-005	25	1.26	0.76	HS
¾	608	805-007	25	1.36	0.72	HS
1	608	805-010	15	1.79	0.99	HS
1 ¼	608	805-012	10	1.93	1.01	HS
1 ½	608	805-015	5	2.08	1.03	HS
2	608	805-020	5	2.39	1.06	HS
2 ½	608	805-025	5	2.87	1.35	HS
3	608	805-030	5	3.52	1.65	HS
4	608	805-040	5	4.07	1.72	HS

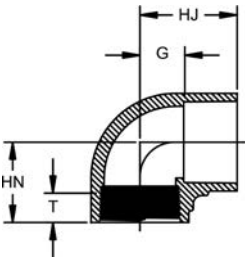


90° Ell (S x S) Schedule 80 Harvel® PVC



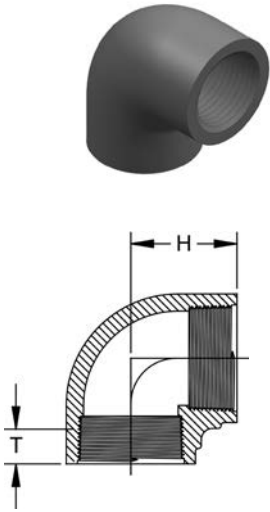
Size (inch)	P/L	Part No.	Pack Qty	H (inch)	G (inch)	Design
¼	608	806-002	50	0.96	0.35	HS
⅜	608	806-003	50	1.15	0.39	HS
½	608	806-005	25	1.41	0.51	SL
¾	608	806-007	25	1.60	0.57	SL
1	608	806-010	10	1.83	0.68	SL
1 ¼	608	806-012	10	2.18	0.90	SL
1 ½	608	806-015	10	2.43	1.04	SL
2	608	806-020	20	2.80	1.27	SL
2 ½	608	806-025	5	3.33	1.53	SL
3	608	806-030	5	3.73	1.81	SL
4	608	806-040	5	4.63	2.32	SL
6	608	806-060	2	6.56	3.53	SL
8	608	806-080	1	8.68	4.55	SL
10	602	806-100	1	10.79	5.77	SL
12	602	806-120	1	12.92	6.87	SL
14	A33	806-140N	1	26.00	19.00	FAB
16	A33	806-160N	1	29.00	21.75	FAB
18	A33	806-180N	1	33.50	24.50	FAB
20	A33	806-200N	1	37.25	27.25	FAB
24	A33	806-240N	1	44.75	31.00	FAB

90° Ell (S x FPT) Schedule 80 Harvel® PVC



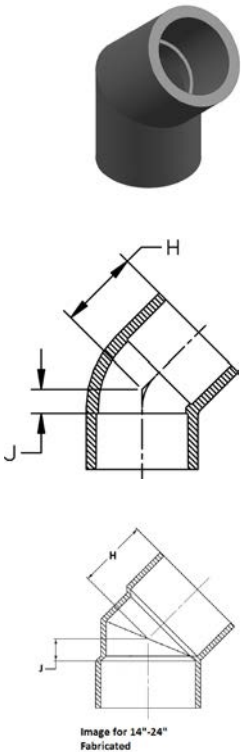
Size (inch)	P/L	Part No.	Pack Qty	HJ (inch)	HN (inch)	G (inch)	T (inch)	Design
¼	608	807-005	25	1.40	1.31	0.50	0.81	HS
⅜	608	807-007	25	1.59	1.36	0.58	0.72	HS
1	608	807-010	10	1.81	1.70	0.67	1.00	HS
1 ¼	608	807-012	10	2.15	1.92	0.90	1.03	HS
1 ½	608	807-015	10	2.39	2.05	1.01	1.05	HS
2	608	807-020	5	2.77	2.36	1.24	1.09	HS
3	608	807-030	5	3.73	3.47	1.83	1.66	HS

90° Ell (FPT x FPT) Schedule 80 Harvel® PVC



Size (inch)	P/L	Part No.	Pack Qty	H (inch)	T (inch)	Design
¼	608	808-002	50	0.94	0.61	HS
⅜	608	808-003	50	1.00	0.63	HS
½	608	808-005	25	1.27	0.78	HS
¾	608	808-007	25	1.36	0.72	HS
1	608	808-010	10	1.71	1.00	HS
1 ¼	608	808-012	10	1.92	1.01	HS
1 ½	608	808-015	10	2.08	1.06	HS
2	608	808-020	5	2.36	1.08	HS
2 ½	608	808-025	5	3.36	1.51	HS
3	608	808-030	5	3.53	1.63	HS
4	608	808-040	5	4.17	1.75	HS

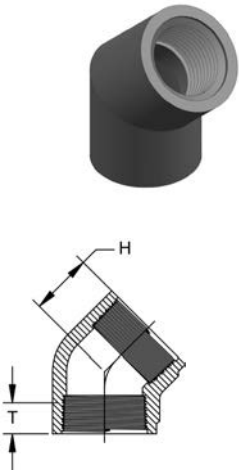
45° Ell (S x S) Schedule 80 Harvel® PVC



Size (inch)	P/L	Part No.	Pack Qty	H (inch)	J (inch)	Design
¼	608	817-002	50	0.81	0.18	HS
⅜	608	817-003	50	0.94	0.19	HS
½	608	817-005	25	1.22	0.30	SL
¾	608	817-007	20	1.29	0.28	SL
1	608	817-010	25	1.48	0.32	SL
1 ¼	608	817-012	15	1.78	0.47	SL
1 ½	608	817-015	10	1.88	0.45	SL
2	608	817-020	5	2.16	0.60	SL
2 ½	608	817-025	5	2.56	0.79	SL
3	608	817-030	5	2.67	0.77	SL
4	608	817-040	5	3.31	1.04	SL
6	608	817-060	2	4.86	1.77	SL
8	608	817-080	2	6.15	2.07	SL
10	602	817-100	1	7.51	2.46	SL
12	602	817-120	1	9.00	2.96	SL
14	A33	817-140N	1	10.25	3.50	FAB
16	A33	817-160N	1	11.75	3.75	FAB
18	A33	817-180N	1	13.25	4.25	FAB
20	A33	817-200N	1	14.75	4.75	FAB
24	A33	817-240N	1	17.75	5.75	FAB

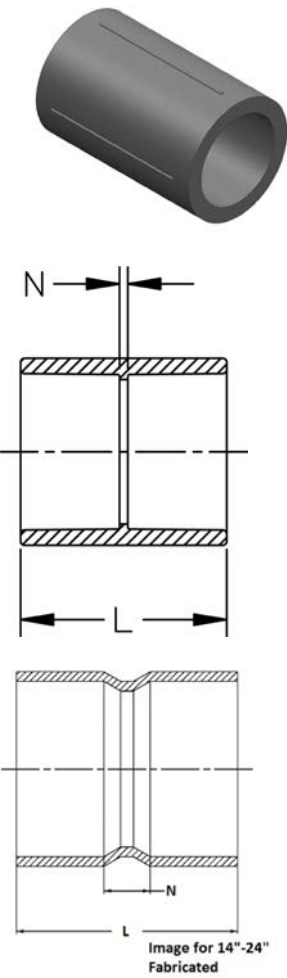
Image for 14°-24°
Fabricated

45° Ell (FPT x FPT) Schedule 80 Harvel® PVC



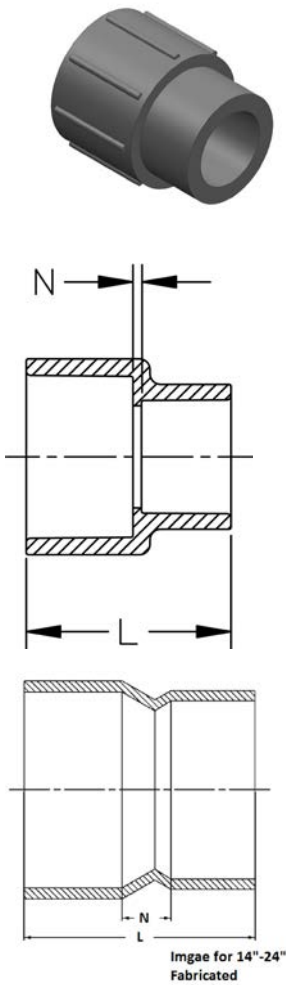
Size (inch)	P/L	Part No.	Pack Qty	H (inch)	T (inch)	Design
¼	608	819-002	50	0.69	0.59	HS
⅜	608	819-003	50	0.86	0.68	HS
½	608	819-005	25	1.02	0.76	SL
¾	608	819-007	20	1.14	0.81	SL
1	608	819-010	25	1.33	0.97	SL
1 ¼	608	819-012	15	1.42	1.01	SL
1 ½	608	819-015	10	1.47	1.07	SL
2	608	819-020	5	1.74	2.37	SL
3	608	819-030	5	2.43	1.66	SL
4	608	819-040	5	2.78	1.76	SL

Coupling (S x S) Schedule 80 Harvel® PVC



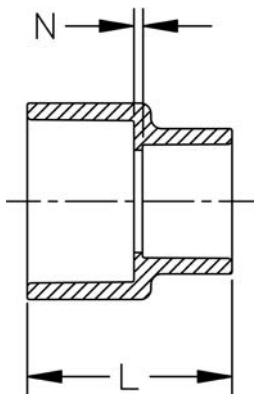
Size (inch)	P/L	Part No.	Pack Qty	L (inch)	N (inch)	Design
¾	608	829-003	50	1.65	0.11	HS
½	608	829-005	25	1.93	0.12	SL
¾	608	829-007	20	2.18	0.12	SL
1	608	829-010	25	2.41	0.12	SL
1 ¼	608	829-012	10	2.67	0.13	SL
1 ½	608	829-015	10	2.94	0.15	SL
2	608	829-020	20	3.18	0.13	SL
2 ½	608	829-025	5	3.77	0.19	SL
3	608	829-030	5	4.04	0.26	SL
4	608	829-040	5	4.80	0.26	SL
6	608	829-060	2	6.40	0.36	SL
8	608	829-080	2	8.40	0.35	SL
10	602	829-100	1	10.77	0.75	SL
12	602	829-120	1	12.82	0.75	SL
14	A33	829-140N	1	17.75	3.75	FAB
16	A33	829-160N	1	20.25	4.25	FAB
18	A33	829-180N	1	22.75	4.75	FAB
20	A33	829-200N	1	25.25	5.25	FAB
24	A33	829-240N	1	30.25	6.25	FAB

Reducing Coupling (S x S) Schedule 80 Harvel® PVC



Size (inch)	P/L	Part No.	Pack Qty	L (inch)	N (inch)	Design
¾ x ½	608	829-101	20	2.13	0.13	HS
1 x ½	608	829-130	25	2.17	0.12	HS
1 x ¾	608	829-131	25	2.26	0.11	HS
1 ¼ x 1	608	829-168	10	2.52	0.10	HS
1 ½ x ½	608	829-209FB	10	2.94	0.66	BUSH
1 ½ x ¾	608	829-210	10	2.50	0.09	BUSH
1 ½ x 1	608	829-211	10	2.65	0.11	HS
1 ½ x 1 ¼	608	829-212	10	2.82	0.09	HS
2 x ½	608	829-247FB	5	3.44	0.87	BUSH
2 x ¾	608	829-248	5	3.14	0.34	HS
2 x 1	608	829-249	5	3.15	0.32	HS
2 x 1 ¼	608	829-250	5	3.05	0.14	HS
2 x 1 ½	608	829-251	5	3.06	0.07	HS
2 ½ x 1 ½	608	829-291	5	3.36	0.14	HS
2 ½ x 2	608	829-292FB	5	4.08	0.66	BUSH
3 x 1	608	829-335FB	5	4.56	1.53	BUSH
3 x 1 ¼	608	829-336FB	5	4.29	1.07	FAB
3 x 1 ½	608	829-337FB	5	4.58	1.15	BUSH
3 x 2	608	829-338	5	3.61	0.17	HS
3 x 2 ½	608	829-339FB	5	4.42	0.63	BUSH
4 x 2	608	829-420FB	5	4.94	1.08	BUSH
4 x 3	608	829-422	5	4.38	0.22	HS
6 x 2	608	829-528FB	2	10.61	4.60	BUSH
6 x 4	608	829-532	2	10.17	3.46	HS
8 x 4	608	829-582FB	2	9.81	3.53	BUSH
8 x 6	608	829-585	2	9.18	2.11	HS
10 x 4	A33	829-623N	1	17.00	10.00	FAB
10 x 6	602	829-626FB	1	11.42	3.29	BUSH
10 x 6	A33	829-626N	1	13.00	5.00	FAB
10 x 8	602	829-628FB	1	11.45	2.32	BUSH
10 x 8	A33	829-628N	1	12.75	3.75	FAB
12 x 4	A33	829-663N	1	26.25	18.25	FAB
12 x 6	A33	829-666N	1	20.50	11.50	FAB
12 x 8	602	829-668FB	1	13.54	3.41	BUSH
12 x 8	A33	829-668N	1	15.50	5.50	FAB
12 x 10	602	829-670FB	1	13.24	2.13	BUSH
12 x 10	A33	829-670N	1	15.00	4.00	FAB
14 x 4	A33	829-696N	1	21.00	3.00	FAB
14 x 6	A33	829-698N	1	31.00	21.00	FAB
14 x 8	A33	829-700N	1	21.00	10.00	FAB
14 x 10	A33	829-702N	1	17.00	5.00	FAB
14 x 12	A33	829-704N	1	16.50	3.50	FAB
16 x 4	A33	829-730N	1	16.50	3.50	FAB
16 x 6	A33	829-732N	1	16.50	4.50	FAB
16 x 8	A33	829-734N	1	18.05	5.00	FAB
16 x 10	A33	829-736N	1	19.50	6.50	FAB
16 x 12	A33	829-738N	1	19.25	5.25	FAB
16 x 14	A33	829-740N	1	19.50	4.50	FAB
18 x 4	A33	829-784N	1	48.50	37.50	FAB
18 x 6	A33	829-786N	1	36.00	24.00	FAB
18 x 8	A33	829-788N	1	42.50	29.50	FAB
18 x 10	A33	829-790N	1	33.50	19.50	FAB
18 x 12	A33	829-792N	1	22.00	7.00	FAB
18 x 14	A33	829-794N	1	22.25	6.25	FAB
18 x 16	A33	829-796N	1	21.75	4.75	FAB
20 x 4	A33	829-814N	1	60.50	48.50	FAB
20 x 6	A33	829-816N	1	55.50	42.50	FAB
20 x 8	A33	829-818N	1	56.25	42.25	FAB
20 x 10	A33	829-820N	1	47.25	32.25	FAB
20 x 12	A33	829-822N	1	37.00	21.00	FAB

table continued on the next page



Size (inch)	P/L	Part No.	Pack Qty	L (inch)	N (inch)	Design
20 x 14	A33	829-824N	1	37.25	20.25	FAB
20 x 16	A33	829-826N	1	24.50	6.50	FAB
20 x 18	A33	829-828N	1	25.25	6.25	FAB
24 x 4	A33	829-904N	1	66.00	52.00	FAB
24 x 6	A33	829-906N	1	61.00	46.00	FAB
24 x 8	A33	829-908N	1	52.00	36.00	FAB
24 x 10	A33	829-910N	1	52.75	35.75	FAB
24 x 12	A33	829-912N	1	42.50	24.50	FAB
24 x 14	A33	829-914N	1	42.75	23.75	FAB
24 x 16	A33	829-916N	1	42.25	22.25	FAB
24 x 18	A33	829-918N	1	29.50	8.50	FAB
24 x 20	A33	829-920N	1	29.25	7.25	FAB

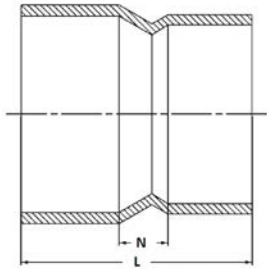
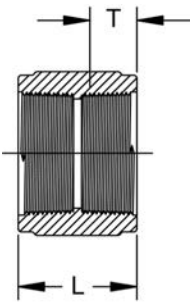


Image for 14"-24"
Fabricated

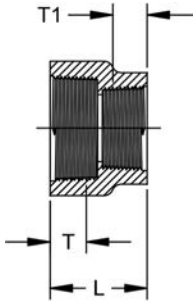
Coupling (FPT x FPT) Schedule 80 Harvel® PVC



Size (inch)	P/L	Part No.	Pack Qty	L (inch)	T (inch)	Design
¼	608	830-002	50	1.29	0.61	HS
¾	608	830-003	50	1.35	0.62	HS
½	608	830-005	25	1.68	0.77	SL
¾	608	830-007	20	1.75	0.80	SL
1	608	830-010	25	2.13	0.99	SL
1 ¼	608	830-012	10	2.19	1.03	SL
1 ½	608	830-015	10	2.22	1.03	SL
2	608	830-020	5	2.29	1.08	SL
2 ½	608	830-025	5	3.33	1.51	SL
3	608	830-030	5	3.53	1.65	SL
4	608	830-040	5	3.76	1.75	SL

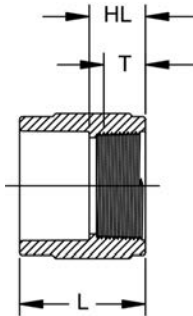


Reducing Coupling (FPT x FPT) Schedule 80 Harvel® PVC



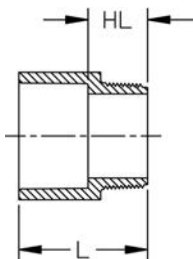
Size (inch)	P/L	Part No.	Pack Qty	L (inch)	T (inch)	T1 (inch)	Design
3/8 x 1/4	608	830-052	50	1.29	0.60	0.59	HS
1/2 x 1/4	608	830-072	50	1.44	0.75	0.59	HS
1/2 x 3/8	608	830-073	50	1.46	0.74	0.60	HS
3/4 x 1/2	608	830-101	25	1.68	0.78	0.78	HS
1 x 1/2	608	830-130	25	1.84	0.98	0.77	HS
1 x 3/4	608	830-131	25	1.88	0.98	0.80	HS
1 1/4 x 3/4	608	830-167	25	1.90	1.00	0.79	HS
1 1/2 x 1	608	830-211	20	2.06	1.02	0.95	HS
2 x 1 1/2	608	830-251	10	2.18	1.05	1.02	HS

Female Adapter (S x FPT) Schedule 80 Harvel® PVC



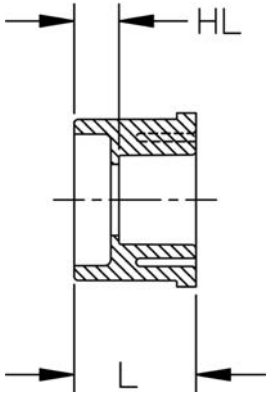
Size (inch)	P/L	Part No.	Pack Qty	HL (inch)	L (inch)	T (inch)	Design
1/4	608	835-002	50	0.75	1.43	0.58	HS
3/8	608	835-003	50	0.75	1.56	0.62	HS
1/2	608	835-005	25	0.91	1.80	0.75	HS
3/4	608	835-007	25	0.95	1.96	0.79	HS
1	608	835-010	25	1.11	2.27	0.98	HS
1 1/4	608	835-012	10	1.18	2.44	1.02	HS
1 1/2	608	835-015	10	1.19	2.59	1.03	HS
2	608	835-020	5	1.25	2.76	1.06	HS
2 1/2	608	835-025	5	1.77	3.53	1.51	HS
3	608	835-030	5	1.91	3.80	1.65	HS
4	608	835-040	5	2.02	4.29	1.74	HS
6	608	835-060	2	3.27	6.37	2.37	SL
8	608	835-080	2	4.35	8.36	2.35	HS
10	602	835-100	2	5.68	10.78	2.68	HS
12	A33	835-120N	1	6.00	11.13	2.13	FAB

Male Adapter (S x MPT) Schedule 80 Harvel® PVC



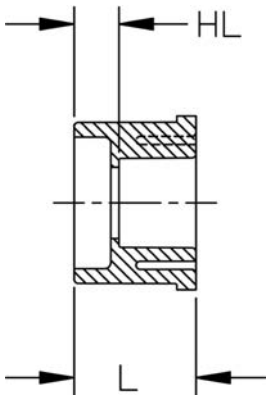
Size (inch)	P/L	Part No.	Pack Qty	HL (inch)	L (inch)	Design
1/2	608	836-005	50	0.94	1.85	SL
3/4	608	836-007	25	1.05	2.03	HS
1	608	836-010	25	1.22	2.38	HS
1 1/4	608	836-012	15	1.28	2.56	HS
1 1/2	608	836-015	10	1.30	2.69	HS
2	608	836-020	5	1.32	2.83	HS
2 1/2	608	836-025	5	1.87	3.70	HS
3	608	836-030	5	1.99	3.90	HS
4	608	836-040	5	2.15	4.40	HS
6	A33	836-060N	1	3.25	6.25	FAB
8	A33	836-080N	1	3.50	7.50	FAB
10	A33	836-100N	1	4.18	9.18	FAB
12	A33	836-120N	1	4.63	10.63	FAB

Flush Style Reducer Bushing (SPG x S) Schedule 80 Harvel® PVC



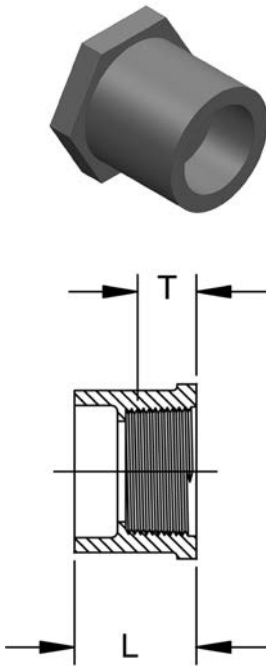
Size (inch)	P/L	Part No.	Pack Qty	HL (inch)	L (inch)	Design
½ x ¼	608	837-072	50	0.47	1.15	FLUSH
½ x ⅜	608	837-073	50	0.33	1.09	FLUSH
¾ x ½	608	837-101	50	0.42	1.30	FLUSH
1 x ½	608	837-130	50	0.55	1.44	FLUSH
1 x ¾	608	837-131	50	0.41	1.43	FLUSH
1 ¼ x ½	608	837-166	25	0.66	1.55	FLUSH
1 ¼ x ¾	608	837-167	25	0.56	1.57	FLUSH
1 ¼ x 1	608	837-168	25	0.44	1.59	FLUSH
1 ½ x ½	608	837-209	25	0.78	1.69	FLUSH
1 ½ x ¾	608	837-210	25	0.67	1.68	FLUSH
1 ½ x 1	608	837-211	25	0.55	1.69	FLUSH
1 ½ x 1 ¼	608	837-212	25	0.44	1.72	FLUSH
2 x ½	608	837-247	10	0.91	1.81	FLUSH
2 x ¾	608	837-248	10	0.79	1.82	FLUSH
2 x 1	608	837-249	10	0.68	1.83	FLUSH
2 x 1 ¼	608	837-250	10	0.54	1.81	FLUSH
2 x 1 ½	608	837-251	10	0.40	1.81	FLUSH
2 ½ x 1 ½	608	837-291	5	0.79	2.31	FLUSH
2 ½ x 2	608	837-292	5	0.47	2.10	FLUSH
3 x 1	608	837-335	5	1.27	2.42	FLUSH
3 x 1 ¼	608	837-336FB	5	1.43	2.71	BUSH
3 x 1 ½	608	837-337	5	0.89	2.43	FLUSH
3 x 2	608	837-338	5	0.86	2.42	FLUSH
3 x 2 ½	608	837-339	5	0.38	2.27	FLUSH
4 x 2	608	837-420	5	1.14	2.70	FLUSH
4 x 3	608	837-422	5	0.77	2.74	FLUSH
6 x 3	608	837-530	2	1.74	3.65	FLUSH
6 x 4	608	837-532	2	1.42	3.67	FLUSH
8 x 6	608	837-585	2	1.69	4.66	FLUSH
10 x 4	602	837-623FB	1	4.01	6.26	BUSH
10 x 6	602	837-626	1	2.59	5.69	FLUSH
10 x 8	602	837-628	1	1.62	5.72	FLUSH
12 x 6	602	837-666FB	1	4.26	7.35	BUSH
12 x 8	602	837-668	1	2.66	6.76	FLUSH
12 x 10	602	837-670	1	1.66	6.77	FLUSH
14 x 4	A33	837-696N	1	5.50	7.50	FAB
14 x 6	A33	837-698N	1	4.50	7.50	FAB
14 x 8	A33	837-700N	1	3.50	7.50	FAB
14 x 10	A33	837-702N	1	2.50	7.50	FAB
14 x 12	A33	837-704N	1	1.50	7.50	FAB
16 x 4	A33	837-730N	1	6.50	8.50	FAB
16 x 6	A33	837-732N	1	5.50	8.50	FAB
16 x 8	A33	837-734N	1	4.50	8.50	FAB
16 x 10	A33	837-736N	1	3.50	8.50	FAB
16 x 12	A33	837-738N	1	2.50	8.50	FAB
16 x 14	A33	837-740N	1	1.50	8.50	FAB
18 x 4	A33	837-784N	1	7.50	9.50	FAB
18 x 6	A33	837-786N	1	6.50	9.50	FAB
18 x 8	A33	837-788N	1	5.50	9.50	FAB
18 x 10	A33	837-790N	1	4.50	9.50	FAB
18 x 12	A33	837-792N	1	3.50	9.50	FAB
18 x 14	A33	837-794N	1	2.50	9.50	FAB
18 x 16	A33	837-796N	1	1.50	9.50	FAB
20 x 4	A33	837-814N	1	8.50	10.50	FAB
20 x 6	A33	837-816N	1	7.50	10.50	FAB
20 x 8	A33	837-818N	1	6.50	10.50	FAB
20 x 10	A33	837-820N	1	5.50	10.50	FAB
20 x 12	A33	837-822N	1	4.50	10.50	FAB
20 x 14	A33	837-824N	1	3.50	10.50	FAB
20 x 16	A33	837-826N	1	2.50	10.50	FAB

table continued on the next page



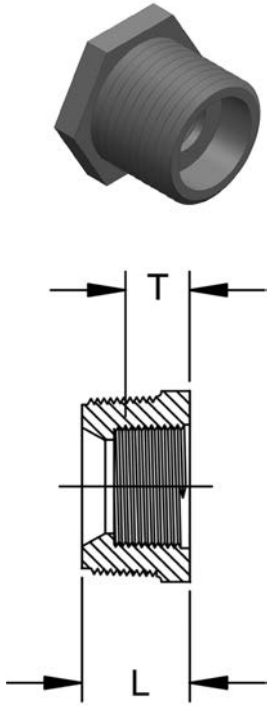
Size (inch)	P/L	Part No.	Pack Qty	HL (inch)	L (inch)	Design
20 x 18	A33	837-828N	1	1.50	10.50	FAB
24 x 4	A33	837-904N	1	10.50	12.50	FAB
24 x 6	A33	837-906N	1	9.50	12.50	FAB
24 x 8	A33	837-908N	1	8.50	12.50	FAB
24 x 10	A33	837-910N	1	7.50	12.50	FAB
24 x 12	A33	837-912N	1	6.50	12.50	FAB
24 x 14	A33	837-914N	1	5.50	12.50	FAB
24 x 16	A33	837-916N	1	4.50	12.50	FAB
24 x 18	A33	837-918N	1	3.50	12.50	FAB
24 x 20	A33	837-920N	1	2.50	12.50	FAB

Flush Style Reducer Bushing (SPG x FPT) Schedule 80 Harvel® PVC



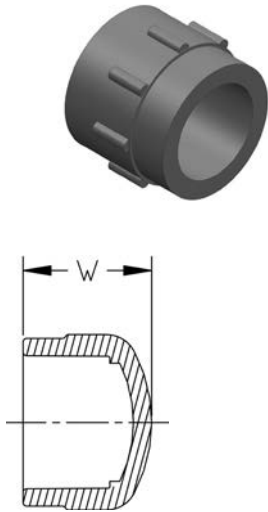
Size (inch)	P/L	Part No.	Pack Qty	L (inch)	T (inch)	Design
3/8 x 1/4	608	838-052E	50	1.59	0.60	Extended
1/2 x 1/4	608	838-072	50	1.14	0.61	FLUSH
1/2 x 3/8	608	838-073	50	1.21	0.60	FLUSH
3/4 x 1/4	608	838-098	50	1.13	0.61	FLUSH
3/4 x 1/2	608	838-101	50	1.28	0.77	FLUSH
1 x 1/2	608	838-130	50	1.42	0.76	FLUSH
1 x 3/4	608	838-131	50	1.41	0.81	FLUSH
1 1/4 x 1/2	608	838-166	15	1.56	0.75	FLUSH
1 1/4 x 3/4	608	838-167	15	1.56	0.79	FLUSH
1 1/4 x 1	608	838-168	15	1.56	0.99	FLUSH
1 1/2 x 1/2	608	838-209	15	1.68	0.76	FLUSH
1 1/2 x 3/4	608	838-210	15	1.69	0.79	FLUSH
1 1/2 x 1	608	838-211	15	1.68	0.99	FLUSH
1 1/2 x 1 1/4	608	838-212	15	1.69	1.10	FLUSH
2 x 1/2	608	838-247	10	1.80	0.77	FLUSH
2 x 3/4	608	838-248	10	1.80	0.80	FLUSH
2 x 1	608	838-249	10	1.80	0.99	FLUSH
2 x 1 1/4	608	838-250	10	1.81	1.02	FLUSH
2 x 1 1/2	608	838-251	10	1.88	1.04	FLUSH
2 1/2 x 1 1/2	608	838-291	5	2.24	1.07	FLUSH
2 1/2 x 2	608	838-292	5	2.12	1.10	FLUSH
3 x 2	608	838-338	5	2.42	1.07	FLUSH
3 x 2 1/2	608	838-339	5	2.25	1.61	FLUSH
4 x 2	608	838-420	5	2.71	1.10	FLUSH
4 x 3	608	838-422	5	2.75	1.62	FLUSH

Flush Style Reducer Bushing (MPT x FPT) Schedule 80 Harvel® PVC



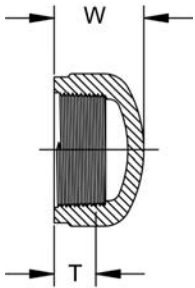
Size (inch)	P/L	Part No.	Pack Qty	L (inch)	T (inch)	Style
3/8 x 1/4	608	839-052	50	0.80	0.60	FLUSH
1/2 x 1/4	608	839-072	50	0.95	0.60	FLUSH
1/2 x 3/8	608	839-073	50	0.96	0.61	FLUSH
3/4 x 1/4	608	839-098	50	1.01	0.61	FLUSH
3/4 x 3/8	608	839-099	50	1.02	0.61	FLUSH
3/4 x 1/2	608	839-101	50	1.08	0.75	FLUSH
1 x 1/4	608	839-128	25	1.23	0.58	FLUSH
1 x 1/2	608	839-130	25	1.24	0.76	FLUSH
1 x 3/4	608	839-131	25	1.28	0.80	FLUSH
1 1/4 x 1/2	608	839-166	25	1.29	0.76	FLUSH
1 1/4 x 3/4	608	839-167	25	1.29	0.79	FLUSH
1 1/4 x 1	608	839-168	25	1.30	1.00	FLUSH
1 1/2 x 3/4	608	839-210	25	1.33	0.78	FLUSH
1 1/2 x 1	608	839-211	25	1.34	0.98	FLUSH
1 1/2 x 1 1/4	608	839-212	25	1.33	1.02	FLUSH
2 x 1/2	608	839-247	10	1.44	0.76	FLUSH
2 x 3/4	608	839-248	10	1.44	0.80	FLUSH
2 x 1	608	839-249	10	1.42	0.97	FLUSH
2 x 1 1/4	608	839-250	10	1.43	1.01	FLUSH
2 x 1 1/2	608	839-251	10	1.35	1.02	FLUSH
3 x 2	608	839-338	5	2.02	1.09	FLUSH
4 x 2	608	839-420	5	2.07	1.10	FLUSH
4 x 3	608	839-422	5	2.06	1.60	FLUSH

Cap (S) Schedule 80 Harvel® PVC



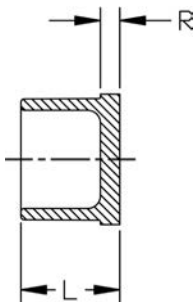
Size (inch)	P/L	Part No.	Pack Qty	W (inch)	Design
1/4	608	847-002	50	0.96	HS
3/8	608	847-003	50	1.11	HS
1/2	608	847-005	50	1.30	HS
3/4	608	847-007	50	1.46	HS
1	608	847-010	25	1.66	HS
1 1/4	608	847-012	15	1.89	HS
1 1/2	608	847-015	10	2.08	HS
2	608	847-020	5	2.32	HS
2 1/2	608	847-025	5	2.61	HS
3	608	847-030	5	3.06	HS
4	608	847-040	5	3.69	HS
6	608	847-060	2	4.86	HS
8	608	847-080	2	6.25	SL
10	602	847-100	1	7.92	SL
12	602	847-120	1	9.37	SL
14	A33	847-140N	1	5.75	FAB
16	A33	847-160N	1	7.00	FAB
18	A33	847-180N	1	8.25	FAB
20	A33	847-200N	1	8.75	FAB
24	A33	847-240N	1	10.25	FAB

Cap (FPT) Schedule 80 Harvel® PVC



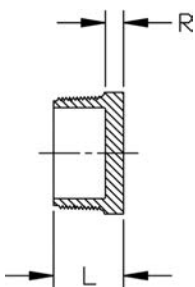
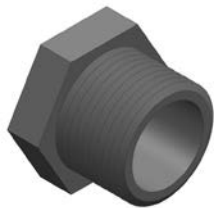
Size (inch)	P/L	Part No.	Pack Qty	W (inch)	T (inch)	Design
¼	608	848-002	50	0.93	0.54	HS
⅜	608	848-003	50	0.94	0.62	HS
½	608	848-005	50	1.14	0.74	HS
¾	608	848-007	25	1.25	0.80	HS
1	608	848-010	25	1.51	0.97	HS
1 ¼	608	848-012	15	1.59	1.00	HS
1 ½	608	848-015	10	1.70	1.01	HS
2	608	848-020	5	1.82	1.06	HS
2 ½	608	848-025	5	2.61	1.45	HS
3	608	848-030	5	2.80	1.83	HS
4	608	848-040	5	3.16	1.80	HS

Plug (SPG) Schedule 80 Harvel® PVC



Size (inch)	P/L	Part No.	Pack Qty	L (inch)	R (inch)
½	608	849-005	50	1.08	0.18
¾	608	849-007	50	1.25	0.22
1	608	849-010	25	1.41	0.25
1 ½	608	849-015	20	1.72	0.31
2	608	849-020	10	1.90	0.38
4	608	849-040	5	2.65	0.39

Plug (MPT) Schedule 80 Harvel® PVC



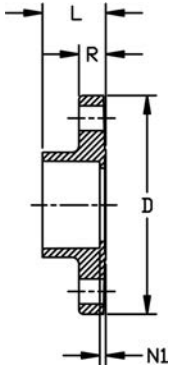
Size (inch)	P/L	Part No.	Pack Qty	L (inch)	R (inch)	Design
¼	608	850-002	50	0.81	0.22	HS
⅜	608	850-003	50	0.83	0.22	HS
½	608	850-005	50	0.98	0.22	HS
¾	608	850-007	50	1.06	0.25	HS
1	608	850-010	25	1.24	0.27	HS
1 ¼	608	850-012	25	1.33	0.31	HS
1 ½	608	850-015	20	1.38	0.34	HS
2	608	850-020	10	1.47	0.39	HS
2 ½	608	850-025	10	1.95	0.38	HS
3	608	850-030	5	1.98	0.38	HS
4	608	850-040	5	2.16	0.39	HS
6	A33	850-060N	1	2.00	0.75	FAB
8	A33	850-080N	1	2.00	0.75	FAB
10	A33	850-100N	1	2.00	0.75	FAB
12	A33	850-120N	1	2.00	0.75	FAB

Flange - One Piece (S) Schedule 80 Harvel® PVC



- ANSI 150 Class according to ANSI B16.5
- 150 psi @ 73°F (10.3 bar @ 22.7°C)
- HC = Honeycomb (Face)

Size (inch)	P/L	Part No.	Pack Qty	# holes	Bolt Dia. (inch)	bolt cir. dia. (inch)	D (inch)	L (inch)	N1 (inch)	R (inch)	Design
½	608	851-005	5	4	½	2.38	3.50	1.02	0.13	0.39	HC
¾	608	851-007	5	4	½	2.75	3.89	1.14	0.13	0.45	HC
1	608	851-010	5	4	½	3.13	4.28	1.30	0.16	0.52	HC
1 ¼	608	851-012	5	4	½	3.50	4.64	1.45	0.14	0.59	HC
1 ½	608	851-015	5	4	½	3.88	5.01	1.54	0.16	0.68	HC
2	608	851-020	5	4	¾	4.75	6.01	1.73	0.16	0.69	HC
2 ½	608	851-025	5	4	¾	5.50	7.00	1.99	0.17	0.75	HC
3	608	851-030	5	4	¾	6.00	7.51	2.46	0.57	1.10	HC
4	608	851-040	5	8	¾	7.50	9.04	2.79	0.52	1.19	HC
6	608	851-060	2	8	¾	9.50	11.13	3.88	0.36	1.38	HC
8	608	851-080	2	8	¾	11.75	13.54	4.90	0.42	1.45	HC

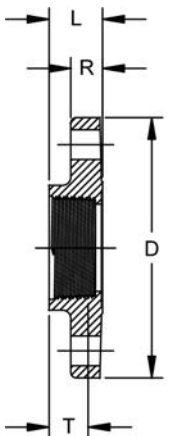


Flange - One Piece (FPT) Schedule 80 Harvel® PVC



- ANSI 150 Class according to ANSI B16.5
- 150 psi @ 73°F (10.3 bar @ 22.7°C)
- HC = Honeycomb (Face)

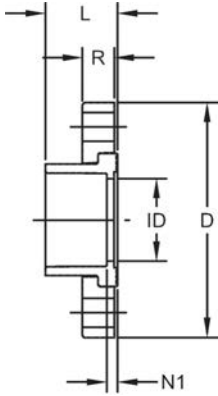
Size (inch)	P/L	Part No.	Pack Qty	# holes	Bolt Dia. (inch)	bolt cir. dia. (inch)	D (inch)	L (inch)	T (inch)	R (inch)	Design
½	608	852-005	5	4	½	2.38	3.51	0.89	0.77	0.39	HC
¾	608	852-007	5	4	½	2.75	3.89	0.91	0.79	0.45	HC
1	608	852-010	5	4	½	3.13	4.28	1.13	1.00	0.53	HC
1 ¼	608	852-012	5	4	½	3.50	4.62	1.20	1.06	0.58	HC
1 ½	608	852-015	5	4	½	3.88	4.99	1.19	1.03	0.68	HC
2	608	852-020	5	4	¾	4.75	6.02	1.22	1.06	0.70	HC
2 ½	608	852-025	5	4	¾	5.50	7.00	1.72	1.53	0.75	HC
3	608	852-030	5	4	¾	6.00	7.50	2.15	1.63	1.15	HC
4	608	852-040	5	8	¾	7.50	9.00	2.30	1.77	1.23	HC



Flange - Van Stone (S) Schedule 80 Harvel® PVC



- ANSI 150 Class according to ANSI B16.5
- 1/2" - 12" pressure rating is 150 psi @ 73°F (10.3 bar @ 22.7°C)
- 14" - 24" pressure rating is 100 psi @ 73°F (6.9 bar @ 22.7°C) - Steel Ring
- HC = Honeycomb (Face)

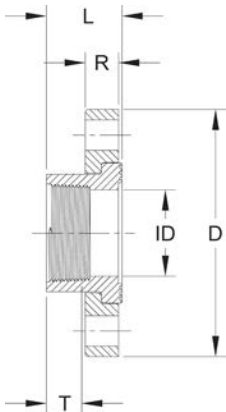


Size (inch)	P/L	Part No.	Pack Qty	# holes	Bolt Dia. (inch)	bolt cir. dia. (inch)	D (inch)	L (inch)	N1 (inch)	R (inch)	ID (inch)	Design
1/2	608	854-005	5	4	1/2	2.38	3.53	1.10	0.18	0.57	0.60	HC
3/4	608	854-007	5	4	1/2	2.75	3.87	1.23	0.18	0.59	0.82	HC
1	608	854-010	5	4	1/2	3.13	4.25	1.38	0.20	0.66	1.03	HC
1 1/4	608	854-012	5	4	1/2	3.50	4.62	1.52	0.21	0.69	1.36	HC
1 1/2	608	854-015	5	4	1/2	3.88	5.01	1.68	0.25	0.75	1.60	HC
2	608	854-020	5	4	5/8	4.75	6.02	1.84	0.29	0.82	2.06	HC
2 1/2	608	854-025	5	4	5/8	5.50	7.01	2.15	0.33	0.98	2.49	HC
3	608	854-030	5	4	5/8	6.00	7.50	2.33	0.39	1.02	3.09	HC
4	608	854-040	5	8	5/8	7.50	8.99	2.75	0.24	1.10	4.06	HC
6	608	854-060	2	8	3/4	9.50	10.98	3.55	0.48	1.25	6.11	HC
8	608	854-080	2	8	3/4	11.75	13.51	4.60	0.51	1.71	8.00	HC
10	602	854-100	2	12	7/8	14.25	15.97	5.66	0.53	1.73	10.10	HC
12	602	854-120	2	12	7/8	17.00	18.95	6.71	0.57	1.72	11.96	HC
14	A33	854-140N	1	12	1	18.75	21.00	11.75	4.75	0.50	12.50	FAB
16	A33	854-160N	1	16	1	21.25	23.50	13.50	5.50	0.50	14.31	FAB
18	A33	854-180N	1	16	1 1/8	22.75	25.00	14.50	5.50	0.50	16.13	FAB
20	A33	854-200N	1	20	1 1/8	25.00	27.50	17.25	7.25	0.50	18.00	FAB
24	A33	854-240N	1	20	1 1/4	29.50	32.00	19.50	7.50	0.50	21.56	FAB

Flange - Van Stone (FPT) Schedule 80 Harvel® PVC



- ANSI 150 Class according to ANSI B16.5
- 150 psi @ 73°F (10.3 bar @ 22.7°C)
- HC = Honeycomb (Face)

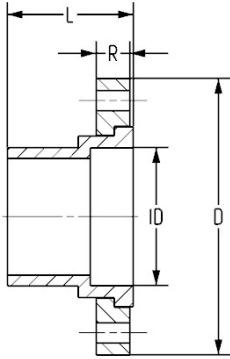


Size (inch)	P/L	Part No.	Pack Qty	# holes	Bolt Dia. (inch)	bolt cir. dia. (inch)	D (inch)	L (inch)	T (inch)	R (inch)	ID (inch)	Design
1/2	608	855-005	5	4	1/2	2.38	3.53	1.10	0.79	0.57	0.63	HC
3/4	608	855-007	5	4	1/2	2.75	3.87	1.23	0.82	0.59	0.83	HC
1	608	855-010	5	4	1/2	3.13	4.25	1.39	1.01	0.66	1.06	HC
1 1/4	608	855-012	5	4	1/2	3.50	4.62	1.50	1.02	0.69	1.38	HC
1 1/2	608	855-015	5	4	1/2	3.88	5.01	1.67	1.06	0.75	1.61	HC
2	608	855-020	5	4	5/8	4.75	6.02	1.82	1.09	0.82	2.08	HC
2 1/2	608	855-025	5	4	5/8	5.50	7.01	2.13	1.58	0.98	2.50	HC
3	608	855-030	5	4	5/8	6.00	7.50	2.36	1.71	1.02	3.08	HC
4	608	855-040	5	8	5/8	7.50	8.99	2.78	1.72	1.10	4.09	HC

Flange - Van Stone (SPG) Schedule 80 Harvel® PVC



- ANSI 150 Class according to ANSI B16.5
 - 1/2" - 12" pressure rating is 150 psi @ 73°F (10.3 bar @ 22.7°C)
 - 14" - 24" pressure rating is 100 psi @ 73°F (6.9 bar @ 22.7°C) - Steel Ring
- HC = Honeycomb (Face)

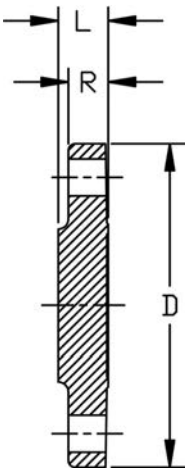


Size (inch)	P/L	Part No.	Pack Qty	# holes	Bolt Dia. (inch)	bolt cir. dia. (inch)	D (inch)	L (inch)	R (inch)	ID (inch)	Design
1/2	608	856-005	5	4	1/2	2.38	3.53	1.72	0.57	0.84	HC
3/4	608	856-007	5	4	1/2	2.75	3.87	1.85	0.59	1.05	HC
1	608	856-010	5	4	1/2	3.13	4.25	2.10	0.66	1.32	HC
1 1/4	608	856-012	5	4	1/2	3.50	4.62	2.28	0.69	1.66	HC
1 1/2	608	856-015	5	4	1/2	3.88	5.01	2.48	0.75	1.90	HC
2	608	856-020	5	4	3/4	4.75	6.02	2.80	0.82	2.38	HC
2 1/2	608	856-025	5	4	3/4	5.50	7.01	3.27	0.98	2.86	HC
3	608	856-030	5	4	3/4	6.00	7.50	3.60	1.02	3.49	HC
4	608	856-040	5	8	3/4	7.50	8.99	4.10	1.10	4.49	HC
6	608	856-060	2	8	3/4	9.50	10.98	5.10	1.25	6.60	HC
8	608	856-080	1	8	3/4	11.75	13.51	6.88	1.71	8.62	HC
10	602	856-100	1	12	7/8	14.25	15.97	8.30	1.73	10.70	HC
12	602	856-120	1	12	7/8	17.00	18.95	9.55	1.72	12.69	HC
14	A33	856-140N	1	12	1	18.75	21.00	13.00	0.50	11.41	FAB
16	A33	856-160N	1	16	1	21.25	23.50	14.00	0.50	13.08	FAB
18	A33	856-180N	1	16	1 1/4	22.75	25.00	16.00	0.50	14.76	FAB
20	A33	856-200N	1	20	1 1/4	25.00	27.50	18.00	0.50	16.43	FAB
24	A33	856-240N	1	20	1 1/4	29.50	32.00	20.00	0.50	19.79	FAB

Flange (Blind) Schedule 80 Harvel® PVC



- ANSI 150 Class according to ANSI B16.5
 - 1/2" - 8" 150 psi @ 73°F (10.3 bar @ 22.7°C)
 - 10" - 24" 50 psi @ 73°F (3.5 bar @ 22.7°C)
- HC = Honeycomb (Face)

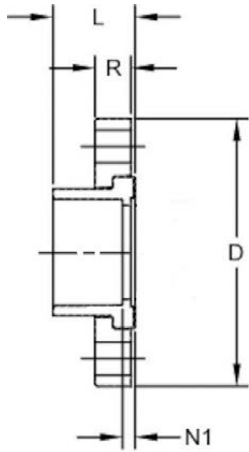


Size (inch)	P/L	Part No.	Pack Qty	# holes	Bolt Dia. (inch)	bolt cir. dia. (inch)	D (inch)	L (inch)	R (inch)	Design
1/2	608	853-005	5	4	1/2	2.38	3.51	0.48	0.39	HC
3/4	608	853-007	5	4	1/2	2.75	3.90	0.55	0.45	HC
1	608	853-010	5	4	1/2	3.13	4.29	0.66	0.53	HC
1 1/4	608	853-012	5	4	1/2	3.50	4.62	0.73	0.59	HC
1 1/2	608	853-015	5	4	1/2	3.88	5.01	0.81	0.68	HC
2	608	853-020	5	4	3/4	4.75	6.02	0.90	0.70	HC
2 1/2	608	853-025	5	4	3/4	5.50	7.00	0.97	0.76	HC
3	608	853-030	5	4	3/4	6.00	7.45	1.03	1.03	HC
4	608	853-040	5	8	3/4	7.50	8.96	1.14	1.14	HC
6	608	853-060	2	8	3/4	9.50	10.95	1.51	1.27	HC
8	608	853-080	2	8	3/4	11.75	13.51	1.62	1.45	HC
10	A33	853-100N	1	12	7/8	14.25	16.00	1.00	1.00	SOLID
12	A33	853-120N	1	12	7/8	17.00	19.00	1.00	1.00	SOLID
14	A33	853-140N	1	12	1	18.75	21.00	1.00	1.00	SOLID
16	A33	853-160N	1	16	1	21.25	23.50	1.00	1.00	SOLID
18	A33	853-180N	1	16	1 1/4	22.75	25.00	1.00	1.00	SOLID
20	A33	853-200N	1	20	1 1/4	25.00	27.50	1.00	1.00	SOLID
24	A33	853-240N	1	20	1 1/4	29.50	32.00	1.00	1.00	SOLID

Flange - Van Stone 300 (S) Schedule 80 Harvel® PVC



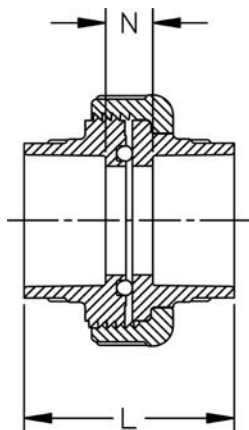
- ANSI 300 Class according to ANSI B16.5
- 150 psi @ 73°F (10.3 bar @ 22.7°C)



Size (inch)	P/L	Part No.	Pack Qty	# holes	Bolt Dia. (inch)	bolt cir. dia. (inch)	D (inch)	L (inch)	N1 (inch)	R (inch)	Design
½	608	854-005-300	5	4	½	2.63	3.75	1.03	0.11	0.57	FAB
¾	608	854-007-300	5	4	¾	3.25	4.63	1.15	0.13	0.59	FAB
1	608	854-010-300	5	4	¾	3.50	4.88	1.38	0.11	0.66	FAB
1 ¼	608	854-012-300	5	4	¾	3.88	5.25	1.45	0.14	0.69	FAB
1 ½	608	854-015-300	5	4	¾	4.50	6.13	1.59	0.15	0.75	FAB
2	608	854-020-300	5	8	¾	5.00	6.50	1.76	0.20	0.82	FAB
2 ½	608	854-025-300	5	8	¾	5.88	7.50	2.05	0.22	0.98	FAB
3	608	854-030-300	5	8	¾	6.63	8.25	2.25	0.30	1.02	FAB
4	608	854-040-300	5	8	¾	7.88	10.00	2.65	0.34	1.10	FAB
6	608	854-060-300	2	12	¾	10.63	12.50	3.45	0.35	1.25	FAB
8	608	854-080-300	2	12	¾	13.00	15.00	4.50	0.40	1.71	FAB
10	602	854-100-300	2	16	1	15.25	17.50	5.63	0.50	1.73	FAB
12	602	854-120-300	2	16	1 ½	17.75	20.50	6.69	0.56	1.72	FAB

Union Type 375 (S x S) Schedule 80 Harvel® PVC

235 psi @ 73°F (16.2 bar @ 22.7°C)



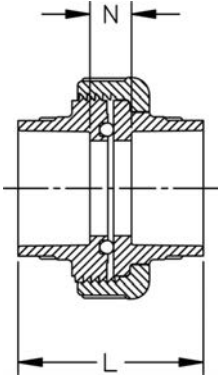
Size (inch)	P/L	EPDM Part No.	FKM Part No.	Pack Qty	L (inch)	N (inch)
½	608	897-375-005	857-375-005	5	2.56	0.78
¾	608	897-375-007	857-375-007	5	2.80	0.76
1	608	897-375-010	857-375-010	5	3.22	0.89
1 ¼	608	897-375-012	857-375-012	5	3.56	0.99
1 ½	608	897-375-015	857-375-015	5	3.76	0.92
2	608	897-375-020	857-375-020	2	4.18	1.11



Union (S x S) Schedule 80 Harvel® PVC

150 psi @ 73°F (10.3 bar @ 22.7°C)

Size (inch)	P/L	EPDM Part No.	FKM Part No.	Pack Qty	L (inch)	N (inch)
3	608	897-030	857-030	1	4.74	0.96
4	608	897-040	857-040	1	5.62	1.11

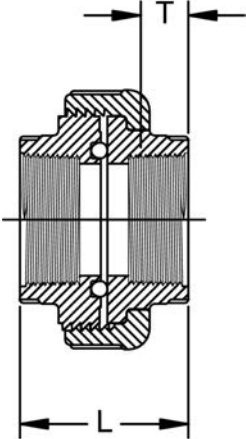


Union Type 375 (FPT X FPT) Schedule 80 Harvel® PVC

• 235 psi @ 73°F (16.2 bar @ 22.7°C)



Size (inch)	P/L	EPDM Part No.	FKM Part No.	Pack Qty	L (inch)	T (inch)
½	608	898-375-005	858-375-005	5	2.06	0.75
¾	608	898-375-007	858-375-007	5	2.11	0.79
1	608	898-375-010	858-375-010	5	2.60	1.01
1 ¼	608	898-375-012	858-375-012	5	2.80	1.06
1 ½	608	898-375-015	858-375-015	5	2.76	1.06
2	608	898-375-020	858-375-020	2	2.93	1.09

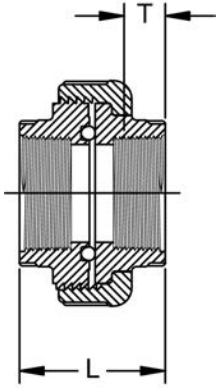




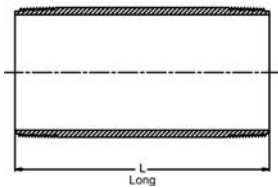
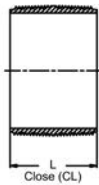
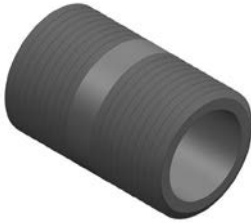
Union (FPT X FPT) Schedule 80 Harvel® PVC

- 150 psi @ 73°F (10.3 bar @ 22.7°C)

Size (inch)	P/L	EPDM Part No.	FKM Part No.	Pack Qty	L (inch)	T (inch)
3	608	898-030	858-030	1	4.75	1.33
4	608	898-040	858-040	1	5.71	1.78

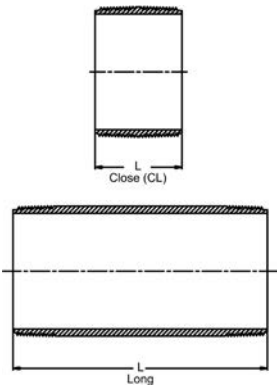


Nipple (MPT x MPT) Schedule 80 Harvel® PVC



Size (inch)	P/L	Part No.	Pack Qty	L (inch)	Design
1/2 x CL	608	861-077	50	1.13	MOLD
1/2 x 2	608	861-079	25	2.00	MOLD
1/2 x 3	608	861-081	25	3.00	MOLD
1/2 x 4	608	861-082	25	4.00	MOLD
1/2 x 5	608	861-083	25	5.00	MOLD
1/2 x 6	608	861-084	25	6.00	MOLD
1/2 x 8	608	861-086	25	8.00	FAB
1/2 x 10	608	861-087	25	10.00	FAB
1/2 x 12	608	861-088	25	12.00	FAB
3/4 x CL	608	861-104	25	1.38	MOLD
3/4 x 2	608	861-020	25	2.00	MOLD
3/4 x 3	608	861-106	25	3.00	MOLD
3/4 x 4	608	861-107	25	4.00	MOLD
3/4 x 5	608	861-108	25	5.00	MOLD
3/4 x 6	608	861-109	25	6.00	MOLD
3/4 x 8	608	861-110	25	8.00	FAB
3/4 x 10	608	861-111	25	10.00	FAB
3/4 x 12	608	861-112	25	12.00	FAB
1 x CL	608	861-133	25	1.50	MOLD
1 x 2	608	861-134	25	2.00	MOLD
1 x 3	608	861-135	25	3.00	MOLD
1 x 4	608	861-136	25	4.00	MOLD
1 x 5	608	861-137	25	5.00	MOLD
1 x 6	608	861-138	25	6.00	MOLD
1 x 8	608	861-139	25	8.00	FAB
1 x 10	608	861-140	25	10.00	FAB
1 x 12	608	861-141	25	12.00	FAB
1 1/4 x CL	608	861-170	25	1.63	MOLD
1 1/4 x 2	608	861-171	25	2.00	MOLD
1 1/4 x 3	608	861-172	25	3.00	MOLD
1 1/4 x 4	608	861-173	25	4.00	MOLD
1 1/4 x 5	608	861-174	25	5.00	MOLD

table continued on the next page



Size (inch)	P/L	Part No.	Pack Qty	L (inch)	Design
1 1/4 x 6	608	861-175	25	6.00	MOLD
1 1/4 x 8	608	861-176	25	8.00	FAB
1 1/4 x 10	608	861-177	25	10.00	FAB
1 1/4 x 12	608	861-178	25	12.00	FAB
1 1/2 x CL	608	861-213	25	1.75	MOLD
1 1/2 x 2	608	861-214	25	2.00	MOLD
1 1/2 x 3	608	861-215	25	3.00	MOLD
1 1/2 x 4	608	861-216	25	4.00	MOLD
1 1/2 x 5	608	861-217	25	5.00	MOLD
1 1/2 x 6	608	861-218	25	6.00	MOLD
1 1/2 x 8	608	861-219	25	8.00	FAB
1 1/2 x 10	608	861-220	25	10.00	FAB
1 1/2 x 12	608	861-221	25	12.00	FAB
2 x CL	608	861-251	25	2.00	MOLD
2 x 2 1/2	608	861-252	25	2.50	MOLD
2 x 3	608	861-253	25	3.00	MOLD
2 x 4	608	861-254	25	4.00	MOLD
2 x 5	608	861-255	25	5.00	MOLD
2 x 6	608	861-256	25	6.00	MOLD
2 x 8	608	861-257	25	8.00	FAB
2 x 10	608	861-258	25	10.00	FAB
2 x 12	608	861-259	25	12.00	FAB
2 1/2 x CL	608	861-291	10	2.50	FAB
2 1/2 x 4	608	861-295	10	4.00	FAB
2 1/2 x 3	608	861-292	10	3.00	FAB
2 1/2 x 5	608	861-296	10	5.00	FAB
2 1/2 x 6	608	861-297	10	6.00	FAB
2 1/2 x 8	608	861-298	10	8.00	FAB
2 1/2 x 10	608	861-299	10	10.00	FAB
2 1/2 x 12	608	861-300	10	12.00	FAB
3 x CL	608	861-338	10	2.63	FAB
3 x 3	608	861-340	10	3.00	FAB
3 x 4	608	861-341	10	4.00	FAB
3 x 5	608	861-342	10	5.00	FAB
3 x 6	608	861-343	10	6.00	FAB
3 x 8	608	861-344	10	8.00	FAB
3 x 10	608	861-345	10	10.00	FAB
3 x 12	608	861-346	10	12.00	FAB
4 x CL	608	861-422	10	2.88	FAB
4 x 4	608	861-423	10	4.00	FAB
4 x 5	608	861-425	10	5.00	FAB
4 x 6	608	861-426	10	6.00	FAB
4 x 8	608	861-427	5	8.00	FAB
4 x 10	608	861-428	5	10.00	FAB
4 x 12	608	861-429	5	12.00	FAB

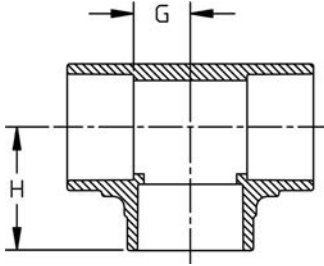
Schedule 80 PVC Low Pressure Fittings



Tee Low Pressure (SxSxS) Schedule 80 Harvel® PVC

- 130 psi @ 73°F (8.96 bar @ 22.7°C)

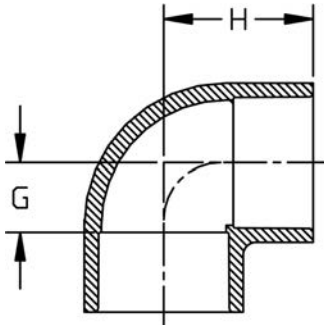
Size (inch)	P/L	Part No.	Pack Qty	H (inch)	G (inch)
10	B11	H801100LP	1	10.83	5.77
12	B11	H801120LP	1	13.38	6.91



90° Ell Low Pressure (S x S) Schedule 80 Harvel® PVC

- 130 psi @ 73°F (8.96 bar @ 22.7°C)

Size (inch)	P/L	Part No.	Pack Qty	H (inch)	G (inch)
10	B11	H806100LP	1	10.75	5.75
12	B11	H806120LP	1	12.96	6.91

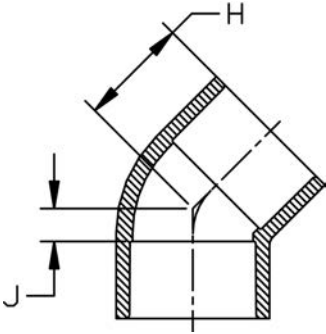


45° Ell Low Pressure (S x S) Schedule 80 Harvel® PVC



- 130 psi @ 73°F (8.96 bar @ 22.7°C)

Size (inch)	P/L	Part No.	Pack Qty	H (inch)	J (inch)
10	B11	H817100LP	1	7.50	2.50
12	B11	H817120LP	1	9.00	3.00

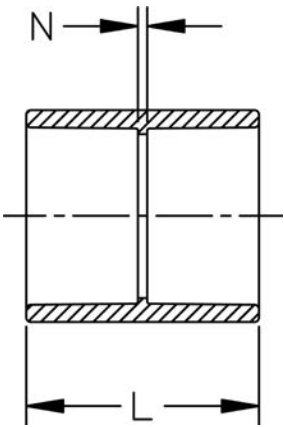


Coupling Low Pressure (S x S) Schedule 80 Harvel® PVC



- 130 psi @ 73°F (8.96 bar @ 22.7°C)

Size (inch)	P/L	Part No.	Pack Qty	L (inch)	N (inch)
10	B11	H829100LP	1	10.81	0.75
12	B11	H829120LP	1	12.81	0.75

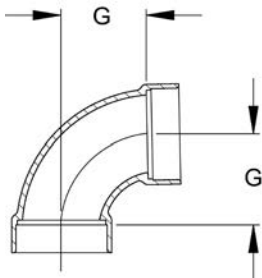


Schedule 80 PVC DWV Fittings



1/4 Bend Short Sweep (SxS) Schedule 80 Harvel[®] PVC

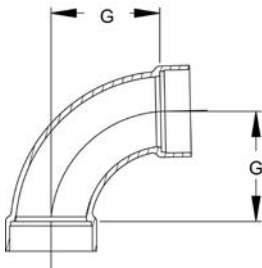
Size (inch)	P/L	Part No.	Pack Qty	G (inch)
1 1/2	608	806-015SS	4	1.75
2	608	806-020SS	4	2.31
3	608	806-030SS	1	3.06
4	608	806-040SS	1	3.88



1/4 Bend Long Sweep (SxS) - (FAB) Schedule 80 Harvel[®] PVC



Size (inch)	P/L	Part No.	Pack Qty	G (inch)
1 1/2	A33	806-015LSN	4	4.13
2	A33	806-020LSN	4	4.75
3	A33	806-030LSN	1	7.00
4	A33	806-040LSN	1	9.00



45° Wye (S x S x S) Schedule 80 Harvel[®] PVC

1-1/2" - 2" 235 psi @ 72°F (16.2 bar @ 22.7°C)
 3" - 6" 150 psi @ 72°F (10.3 bar @ 22.7°C)
 8" - 24" 100 psi @ 72°F (6.9 bar @ 22.7°C)



Size (inch)	P/L	Part No.	Pack Qty	GJ (inch)	GN (inch)	H (inch)	HJ (inch)	L (inch)	N (inch)	Design
1 1/2	608	870-015	20	2.79	1.20	2.60	4.18	6.80	4.02	SL
2	608	870-020	10	3.56	1.36	2.87	5.07	7.99	4.97	SL
2 1/2	H02	870-025S	1	3.97	0.84	2.59	5.72	8.31	3.97	SL
3	608	870-030	4	4.91	1.82	3.73	6.83	10.45	6.62	SL
4	608	870-040	4	6.26	2.06	4.41	8.61	12.94	8.24	SL
6	608	870-060	2	8.38	1.85	4.90	11.44	16.50	10.39	HS
8	608	870-080	1	11.09	1.90	5.92	15.11	21.35	13.30	HS
10	A33	875-100N	1	19.75	5.50	11.25	24.75	31.75	21.75	FAB
12	A33	875-120N	1	22.63	6.50	12.50	28.63	37.50	25.50	FAB
14	A33	875-140N	1	25.75	7.00	14.00	32.75	41.75	27.75	FAB

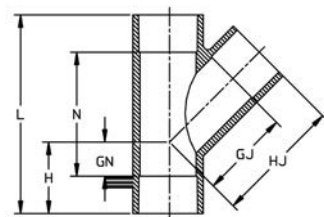
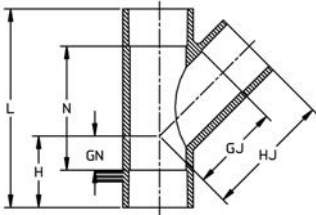


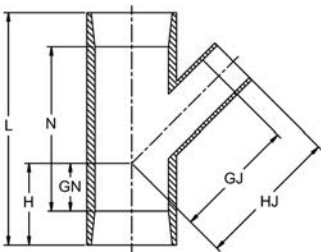
table continued on the next page



Size (inch)	P/L	Part No.	Pack Qty	GJ (inch)	GN (inch)	H (inch)	HJ (inch)	L (inch)	N (inch)	Design
16	A33	875-160N	1	28.88	7.75	16.00	36.88	47.25	31.25	FAB
18	A33	875-180N	1	32.50	8.50	17.50	41.50	53.00	35.00	FAB
20	A33	875-200N	1	35.50	9.50	19.50	45.50	58.75	38.75	FAB
24	A33	875-240N	1	42.00	11.00	23.00	54.00	70.00	46.00	FAB

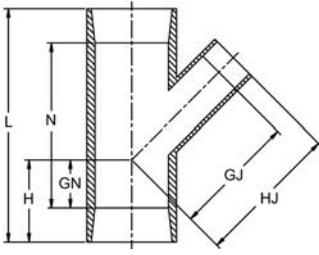
Reducing 45° Wye (S x S x S) Schedule 80 Harvel® PVC

2" 235 psi @ 72°F (16.2 bar @ 22.7° C)
 3" - 6" 150 psi @ 72°F (10.3 bar @ 22.7°C)
 8" - 24" 100 psi @ 72°F (6.9 bar @ 22.7°C)



Size (inch)	P/L	Part No.	Pack Qty	GJ (inch)	GN (inch)	H (inch)	HJ (inch)	L (inch)	N (inch)	Design
2 x 1 1/2	608	870-251FB	10	3.96	1.36	2.87	5.37	7.99	4.97	BUSH
3 x 1 1/2	608	870-337FB	4	5.80	1.82	3.73	7.34	10.45	6.62	BUSH
3 x 2	608	870-338FB	4	5.77	1.82	3.73	7.33	10.45	6.62	BUSH
4 x 2	608	870-420FB	4	7.40	2.06	4.41	7.40	12.94	8.24	BUSH
4 x 3	608	870-422FB	4	7.03	2.06	4.41	9.00	12.94	8.24	BUSH
6 x 2	608	870-528FB	2	8.24	1.87	4.91	8.24	16.49	10.42	BUSH
6 x 3	608	870-530FB	2	7.88	1.87	4.91	9.84	16.49	10.42	BUSH
6 x 4	608	870-532	2	7.14	1.87	4.91	9.36	16.49	10.42	HS
8 x 3	608	870-580FB	1	10.23	0.41	4.43	12.20	15.98	7.95	BUSH
8 x 4	608	870-582	1	9.46	0.41	4.43	11.73	15.98	7.95	HS
8 x 6	608	870-585FB	1	12.78	1.90	5.92	15.76	21.35	13.30	BUSH
10 x 4	A33	875-623N	1	14.00	1.25	6.25	16.00	23.00	13.00	FAB
10 x 6	A33	875-626N	1	16.13	2.75	7.50	19.13	26.00	16.00	FAB
10 x 8	A33	875-628N	1	17.50	4.00	9.25	21.50	28.00	18.75	FAB
12 x 4	A33	875-663N	1	15.50	0.50	6.00	17.50	25.75	13.75	FAB
12 x 6	A33	875-666N	1	16.68	2.00	8.00	20.50	28.68	16.68	FAB
12 x 8	A33	875-668N	1	19.00	3.50	9.50	23.00	31.50	19.50	FAB
12 x 10	A33	875-670N	1	21.25	5.00	11.00	26.25	34.50	22.50	FAB
14 x 4	A33	875-696N	1	16.25	0.25	7.25	18.25	28.25	14.25	FAB
14 x 6	A33	875-698N	1	18.50	1.75	8.63	21.50	31.25	17.25	FAB
14 x 8	A33	875-700N	1	19.75	3.00	10.00	23.75	34.00	20.00	FAB
14 x 10	A33	875-702N	1	22.00	4.50	11.50	27.00	37.00	23.00	FAB
14 x 12	A33	875-704N	1	23.50	6.00	13.00	29.50	39.75	25.75	FAB
16 x 4	A33	875-730N	1	17.75	-0.75	7.50	19.75	31.00	15.00	FAB
16 x 6	A33	875-732N	1	19.88	1.00	9.00	22.88	34.00	18.00	FAB
16 x 8	A33	875-734N	1	21.25	2.50	10.25	25.25	36.75	20.75	FAB
16 x 10	A33	875-736N	1	23.50	4.00	12.00	28.50	39.75	23.75	FAB
16 x 12	A33	875-738N	1	25.00	5.50	14.25	31.00	42.75	26.75	FAB
16 x 14	A33	875-740N	1	27.25	6.25	14.25	34.25	44.50	28.50	FAB
18 x 4	A33	875-784N	1	19.00	-1.25	8.00	21.00	34.00	16.00	FAB
18 x 6	A33	875-786N	1	21.25	0.50	9.50	24.25	37.00	19.00	FAB
18 x 8	A33	875-788N	1	22.75	2.00	11.00	26.75	39.75	21.75	FAB
18 x 10	A33	875-790N	1	25.00	3.50	12.50	30.00	42.75	24.75	FAB
18 x 12	A33	875-792N	1	26.25	4.75	13.75	32.50	45.50	27.50	FAB
18 x 14	A33	875-794N	1	28.75	5.75	14.75	35.75	47.50	29.50	FAB
18 x 16	A33	875-796N	1	30.25	7.25	16.00	38.25	50.25	32.25	FAB
20 x 4	A33	875-814N	1	20.50	-1.75	8.50	22.50	36.75	16.75	FAB
20 x 6	A33	875-816N	1	22.75	-0.25	10.00	25.75	39.75	19.75	FAB
20 x 8	A33	875-818N	1	24.25	1.50	11.50	28.25	42.75	22.75	FAB
20 x 10	A33	875-820N	1	26.50	3.00	13.00	31.50	45.75	25.75	FAB
20 x 12	A33	875-822N	1	28.00	4.25	14.25	34.00	48.50	28.50	FAB
20 x 14	A33	875-824N	1	30.25	5.25	15.00	37.25	50.25	30.25	FAB
20 x 16	A33	875-826N	1	31.75	6.50	16.50	39.75	53.00	33.00	FAB
20 x 18	A33	875-828N	1	34.00	8.00	18.00	43.00	56.00	36.00	FAB
24 x 4	A33	875-904N	1	23.25	-3.00	9.25	25.25	42.50	18.50	FAB
24 x 6	A33	875-906N	1	25.50	-1.50	10.75	28.50	45.50	21.54	FAB

table continued on the next page

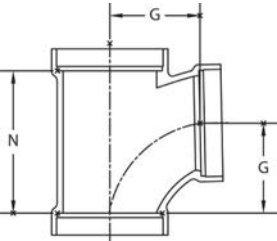


Size (inch)	P/L	Part No.	Pack Qty	GJ (inch)	GN (inch)	H (inch)	HJ (inch)	L (inch)	N (inch)	Design
24 x 8	A33	875-908N	1	27.00	0.00	12.00	31.00	48.25	24.25	FAB
24 x 10	A33	875-910N	1	29.25	1.75	13.50	34.25	51.25	27.25	FAB
24 x 12	A33	875-912N	1	30.50	3.25	15.00	36.50	54.25	30.25	FAB
24 x 14	A33	875-914N	1	33.00	4.00	16.00	40.00	56.00	32.00	FAB
24 x 16	A33	875-916N	1	34.50	5.50	17.50	42.50	58.75	34.75	FAB
24 x 18	A33	875-918N	1	36.75	6.75	18.75	45.75	61.50	37.50	FAB
24 x 20	A33	875-920N	1	38.25	8.25	20.25	48.25	64.50	40.50	FAB



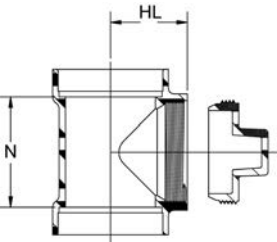
Sanitary Tee (SxSxS) Schedule 80 Harvel® PVC

Size (inch)	P/L	Part No.	Pack Qty	G (inch)	N (inch)
1 1/2	608	37R461501	5	1.75	2.75
2	608	37R461502	5	2.31	3.69
3	608	37R461503	5	3.06	4.88
4	608	37R461504	5	3.88	6.13

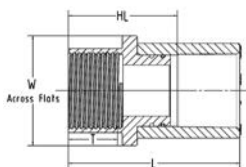


Cleanout Tee with Plug (SxSxFPT) Schedule 80 Harvel® PVC

Size (inch)	P/L	Part No.	Pack Qty	HL (inch)	N (inch)
1 1/2	608	37R461101	2	2.07	1.80
2	608	37R461102	2	2.35	2.32
3	608	37R461103	2	3.51	3.63
4	608	37R461104	2	4.07	4.25



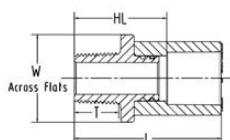
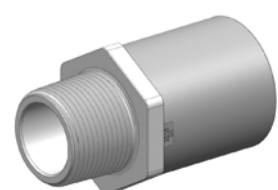
Schedule 80 PVC Metal Transition Fittings



PVC-to-316SS Female Adapter (SxFPT) Schedule 80 Harvel® PVC

- 150 psi @ 73°F (10.3 bar @ 22.7°C)

Size (inch)	P/L	Part No.	Pack Qty	HL (inch)	L (inch)	T (inch)	W (inch)
½	A35	868-005SS	10	1.49	2.38	0.84	1.25
¾	A35	868-007SS	10	1.67	2.68	0.92	1.50
1	A35	868-010SS	6	1.98	3.11	0.96	1.75
1 ¼	A35	868-012SS	5	2.19	3.45	1.04	2.12
1 ½	A35	868-015SS	5	2.35	3.73	1.04	2.50
2	A35	868-020SS	4	2.63	4.14	1.29	3.00



PVC-to-316SS Male Adapter (SxMPT) Schedule 80 Harvel® PVC

- 150 psi @ 73°F (10.3 bar @ 22.7°C)

Size (inch)	P/L	Part No.	Pack Qty	HL (inch)	L (inch)	T (inch)	W (inch)
½	A35	869-005SS	10	1.49	2.38	0.70	1.25
¾	A35	869-007SS	10	1.67	2.68	0.74	1.50
1	A35	869-010SS	6	1.98	3.11	0.92	1.75
1 ¼	A35	869-012SS	5	2.19	3.45	0.95	2.12
1 ½	A35	869-015SS	5	2.35	3.73	0.99	2.50
2	A35	869-020SS	4	2.64	4.14	1.03	3.00

Metal Union End Connectors Type 375 (316 SS)

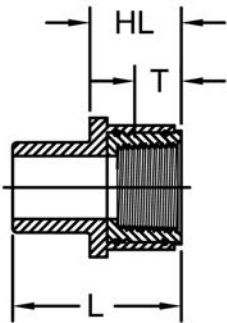
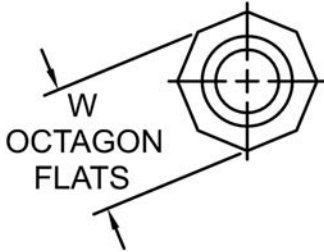
150 psi @ 73°F (10.3 bar @ 22.7°C)
Union Sold Separately



Size (inch)	P/L	Part No.	Pack Qty
½	A35	37X003314	1
¾	A35	37X003315	1
1	A35	37X003316	1
1 ¼	A35	37X003317	1
1 ½	A35	37X003318	1
2	A35	37X003319	1

PVC-to-Brass Transition Fittings (SPG x FPT) Schedule 80 Harvel® PVC

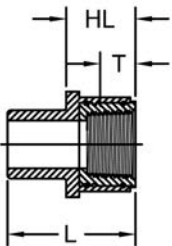
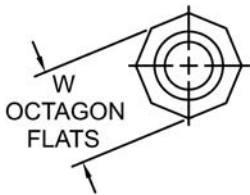
150 psi @ 73°F (10.3 bar @ 22.7°C)



Size (inch)	P/L	Part No.	Pack Qty	HL (inch)	L (inch)	T (inch)	W (inch)
½	A35	878-005BR	25	1.02	1.75	0.70	1.27
¾	A35	878-007BR	15	1.07	2.07	0.74	1.52
1	A35	878-010BR	15	1.32	2.44	0.81	1.93
1 ¼	A35	878-012BR	15	1.38	2.49	0.85	2.29
1 ½	A35	878-015BR	10	1.44	2.74	0.87	2.60
2	A35	878-020BR	5	1.43	2.81	1.11	3.36

PVC-to-316 SS Transition Fittings (SPG x FPT) Schedule 80 Harvel® PVC

150 psi @ 73°F (10.3 bar @ 22.7°C)

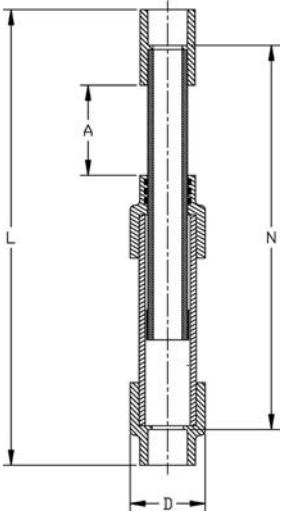


Size (inch)	P/L	Part No.	Pack Qty	HL (inch)	L (inch)	T (inch)	W (inch)
½	A35	878-005SS	25	1.02	1.75	0.70	1.27
¾	A35	878-007SS	15	1.07	2.07	0.74	1.52
1	A35	878-010SS	15	1.32	2.44	0.81	1.93
1 ¼	A35	878-012SS	15	1.38	2.49	0.85	2.29
1 ½	A35	878-015SS	10	1.45	2.74	0.87	2.60
2	A35	878-020SS	5	1.43	2.81	1.11	3.36

Schedule 80 PVC Expansion Joints

Expansion Joint 6" Travel (S x S) Schedule 80 Harvel® PVC

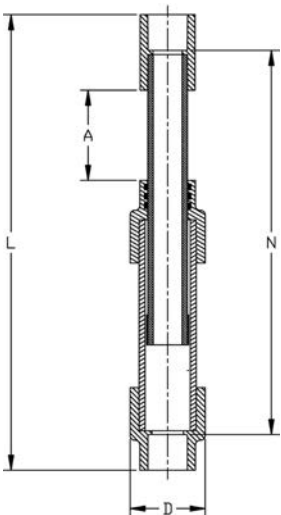
To order SxSPG add "P" to end of part number.
To order FxF add "F" to end of part number.



Size (inch)	P/L	EPDM Part No.	FKM Part No.	A (inch)	D (inch)	L (inch)	N (inch)
½	634	826-005X6	836-005X6	3.00	1.86	13.97	12.17
¾	634	826-007X6	836-007X6	3.00	2.23	14.44	12.40
1	634	826-010X6	836-010X6	3.00	2.50	14.98	12.69
1 ¼	634	826-012X6	836-012X6	3.00	2.89	15.56	12.98
1 ½	634	826-015X6	836-015X6	3.00	3.51	16.00	13.21
2	634	826-020X6	836-020X6	3.00	4.40	18.05	15.01
3	634	826-030X6	836-030X6	3.00	5.52	19.75	16.00
4	634	826-040X6	836-040X6	3.00	7.92	28.29	23.76
6	634	826-060X6	836-060X6	3.00	9.80	27.79	21.73
8	634	826-080X6	836-080X6	3.00	10.75	25.35	17.31
10	634	826-100X6	836-100X6	3.00	12.75	29.64	19.60

Expansion Joint 12" Travel (S x S) Schedule 80 Harvel® PVC

To order SxSPG add "P" to end of part number.
To order FxF add "F" to end of part number.



Size (inch)	P/L	EPDM Part No.	FKM Part No.	A (inch)	D (inch)	L (inch)	N (inch)
½	634	826-005X12	836-005X12	6.00	1.86	23.10	21.30
¾	634	826-007X12	836-007X12	6.00	2.23	23.57	21.52
1	634	826-010X12	836-010X12	6.00	2.50	24.11	21.81
1 ¼	634	826-012X12	836-012X12	6.00	2.89	24.69	22.11
1 ½	634	826-015X12	836-015X12	6.00	3.51	25.12	22.34
2	634	826-020X12	836-020X12	6.00	4.40	27.05	24.01
3	634	826-030X12	836-030X12	6.00	5.52	28.75	25.00
4	634	826-040X12	836-040X12	6.00	7.92	37.28	32.76
6	634	826-060X12	836-060X12	6.00	9.80	26.79	30.73
8	634	826-080X12	836-080X12	6.00	10.75	28.35	20.31
10	634	826-100X12	836-100X12	6.00	12.75	32.64	22.60